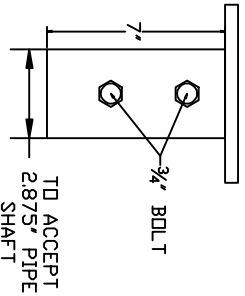
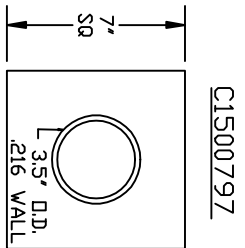
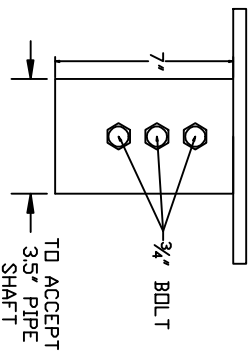
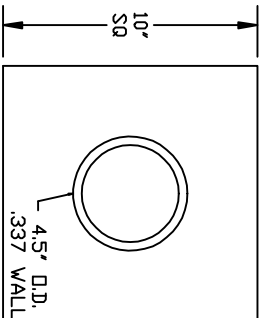


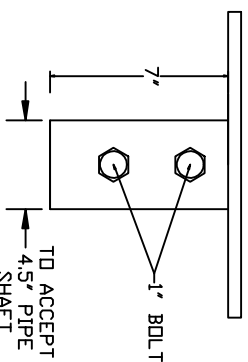
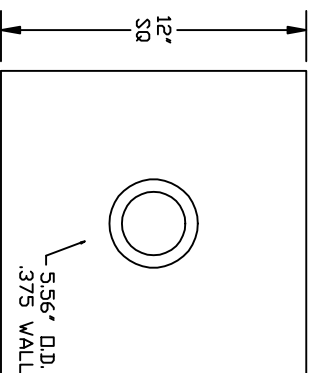
COMPRESSION/TENSION NEW CONSTRUCTION CAPS FOR PIPE SHAFTS



COMPRESSIVE STRENGTH: 72KIP
TENSILE STRENGTH: 72KIP



COMPRESSIVE STRENGTH: 120KIP
TENSILE STRENGTH: 120KIP



COMPRESSIVE STRENGTH: 130KIP
TENSILE STRENGTH: 130KIP

=NOTES=

1. FINISH: STANDARD CATALOG NUMBER IS MILL FINISH STEEL.
TD ORDER GALVANIZED FINISH ADD 'G' TD STANDARD CATALOG NUMBER.
2. MATERIAL SPECIFICATIONS:
PLATE: HOT ROLLED STEEL PLATE PER ASTM A572 GRD. 50.
PIPE: ERW PIPE PER ASTM A53 GRADE B OR PER ASTM A500 GRADE 50.
BOLTS: 3/4" BOLTS PER SAE J429 GRADE 5.
1" BOLTS PER GRADE 8.

CHANCE TOLERANCE CHART		HUBBELL POWER SYSTEMS	
CONFIDENTIAL: THIS DRAWING AND ITS CONTENTS ARE CONFIDENTIAL AND THE POWER SYSTEMS. NO PUBLICATION, DISTRIBUTION OR COPIES MAY BE MADE WITHOUT THE WRITTEN CONSENT OF HUBBELL POWER SYSTEMS. UNPUBLISHED. ALL RIGHTS RESERVED UNDER THE COPYRIGHT LAWS.		DO NOT SCALE THIS DRAWING	
TITLE BRACKET, COMPRES./TEN. NEW CONSTRUCTION		SIZE SB SA150-0797	DATE / PART / ASSY NO. SEE DRAWING
DRAWN BY JCA		DATE 6/3/10	SHEET 1 OF 1