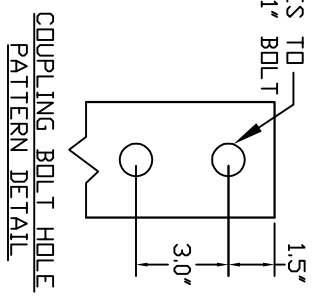
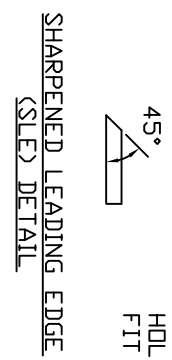
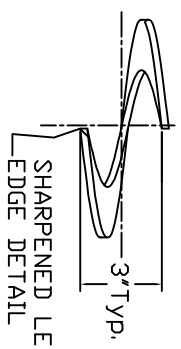
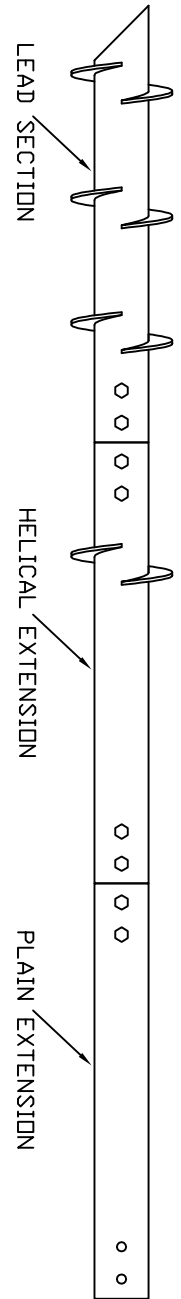


RS4500.337 LEADS AND HELICAL EXTENSIONS

TORQUE STRENGTH RATING = 23,000 FT-LB
 ULTIMATE TENSION/COMPRESSIN STRENGTH = 140 KIP

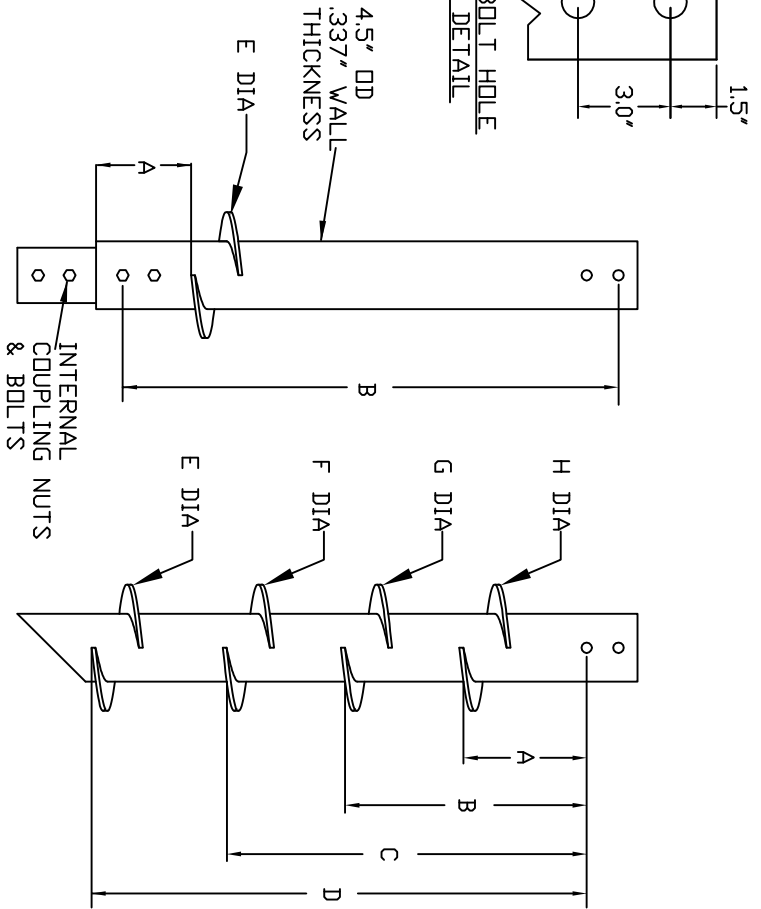
TYPICAL PIER INSTALLATION



CATALOG NO.	RS4500.337 LEADS AND EXTENSIONS								
	LEAD/EXT. (IN)	A (IN)	B (IN)	C (IN)	D (IN)	E (IN)	F (IN)	G (IN)	H (IN)
C1070917	LEAD	--	--	--	75	8	--	--	--
C1070889	LEAD	--	21	51	75	8	10	12	--
C1070890	LEAD	26	62	92	116	8	10	12	14
C1070887	EXTENSION	18	57	--	--	14	--	--	--
T1071479	LEAD	--	--	7	30	10	12	--	--
T1071480	EXTENSION	31	39	--	--	14	--	--	--
T1071481	EXTENSION	31	39	--	--	16	--	--	--

-NOTES-

1. HELIX MATERIAL: HOT ROLLED LOW ALLOY STEEL SHEET, OR PLATE PER ASTM A656 GRADE 80.
2. PIPE SHAFT MATERIAL: STEEL PIPE PER ASTM A500 GRADE B.
3. INTERNAL COUPLING MATERIAL: 3.75" OD X 0.5" WALL THICKNESS PER ASTM A513 TYPE 5.
4. COUPLING BOLTS: 1" DIA X 5.5" LONG HEX HEAD PER SAE J429 GRADE 8.
5. MANUFACTURER TO HAVE IN EFFECT INDUSTRY RECOGNIZED WRITTEN QUALITY CONTROL.
6. ALL WELDING TO BE DONE BY WELDERS CERTIFIED UNDER SECTION 5 OF THE AWS CODE D1.1.
7. LEAD AND EXTENSION SECTION LENGTHS AND HELIX SPACINGS ARE NOMINAL.



HELICAL EXTENSION

HELICAL LEAD

CHANCE

HUBBELL POWER SYSTEMS

RS4500.337 LEADS AND HELICAL EXTENSIONS

SA1070889

DATE 1/8/13

SHEET 1/1