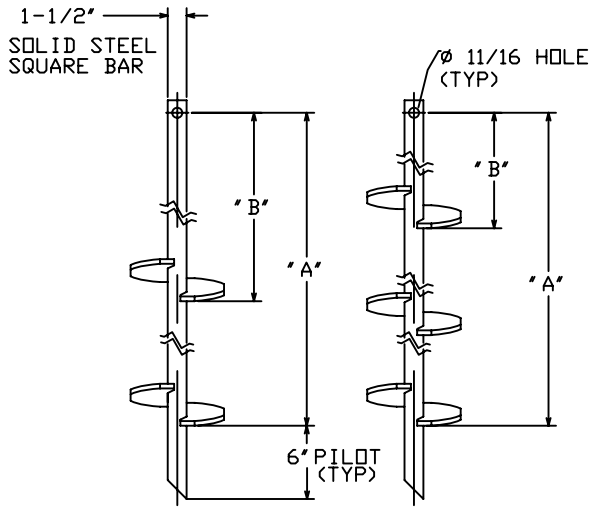


SS125 SOIL SCREW RETENTION WALL SYSTEM

ALLOWABLE TORQUE CAPACITY - 4,000 FT-LBS.
 ULTIMATE TENSION STRENGTH OF ANCHORS - 50,000 LBS.

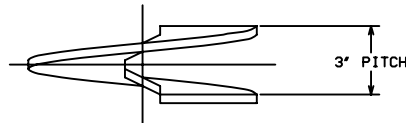
-NOTES-

- HOT DIP GALVANIZED PER ASTM A153-(LATEST REV.)
- LEAD AND EXTENSION SECTION LENGTHS AND HELIX SPACINGS ARE NOMINAL, EXPECT SOME VARIANCE.
- NOMINAL SPACING BETWEEN HELIX PLATES IS 29".
- HELIX MATERIAL: LOW CARBON STEEL MEETING THE GENERAL REQUIREMENTS OF AISI OR ASTM A572, A656, OR A1018, 3/8" THICK.
- SHAFT MATERIAL: HOT ROLLED ROUND CORNERED (RCS) SOLID STEEL BARS PER ASTM A29 MINIMUM YIELD STRENGTH = 90 KSI.
- COUPLING BOLTS: 5/8" DIA. X 3" LONG HEX HEAD PER ASTM A325 TYPE 1.

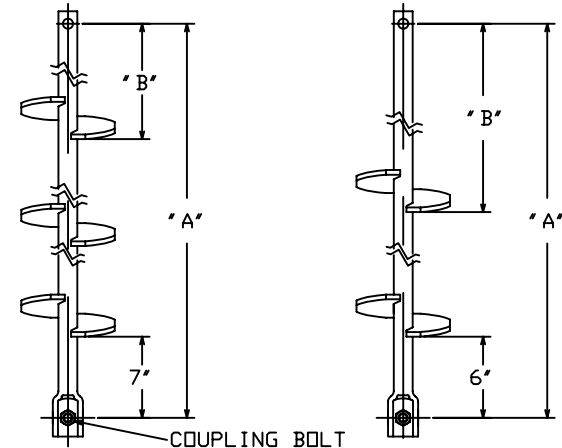


TWIN HELIX LEAD SECTION

TRIPLE HELIX LEAD SECTION



HELIX MUST BE FORMED BY MATCHING METAL DIE (SIDE VIEW OF TRUE HELICAL FORM)



TRIPLE HELIX EXTENSION

TWIN HELIX EXTENSION

SOIL SCREW LEADS					
CATALOG NO	NO. OF HELIX	DIA. OF HELIX	"A"	"B"	FINISH
C1500581	2	6"	58.0'	28.0'	GALV.
C1500582	2	8"	58.0'	28.0'	GALV.
C1500583	3	6"	77.0'	47.0'	GALV.
C1500584	3	8"	77.0'	47.0'	GALV.
C1500581NG	2	6"	58.0'	28.0'	NON GALV.
C1500582NG	2	8"	58.0'	28.0'	NON GALV.
C1500583NG	3	6"	77.0'	47.0'	NON GALV.
C1500584NG	3	8"	77.0'	47.0'	NON GALV.

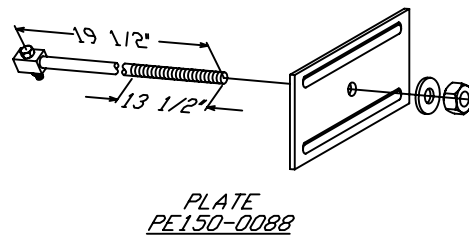
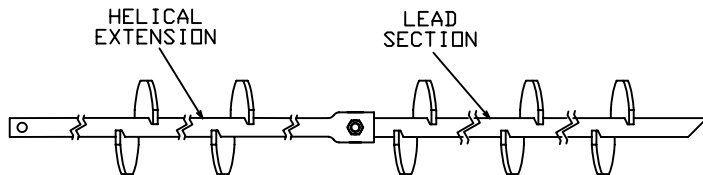


PLATE PE150-0088

SOIL SCREW EXTENSIONS					
CATALOG NO	NO. OF HELIX	DIA. OF HELIX	"A"	"B"	FINISH
C1500585	2	6"	57.5'	23.0'	GALV.
C1500586	2	8"	57.5'	23.0'	GALV.
C1500587	3	6"	80.5'	16.0'	GALV.
C1500588	3	8"	80.5'	16.0'	GALV.
C1500585NG	2	6"	57.5'	23.0'	NON GALV.
C1500586NG	2	8"	57.5'	23.0'	NON GALV.
C1500587NG	3	6"	80.5'	16.0'	NON GALV.
C1500588NG	3	8"	80.5'	16.0'	NON GALV.



TYPICAL ANCHOR ASSEMBLY

CHANCE HELICAL <small>CONFIDENTIAL: THIS DRAWING AND ITS CONTENTS ARE CONFIDENTIAL AND THE EXCLUSIVE PROPERTY OF HUBBELL POWER SYSTEMS, INC. NO PUBLICATION, DISTRIBUTION OR COPIES MAY BE MADE WITHOUT THE PRIOR WRITTEN CONSENT OF HUBBELL POWER SYSTEMS, INC. HUBBELL POWER SYSTEMS UNPUBLISHED ALL RIGHTS RESERVED UNDER THE COPYRIGHT LAWS.</small>		
	HUBBELL POWER SYSTEMS SS125 SOIL SCREW RETENTION WALL SYSTEM	
SIZE: A DWG NO.: SA1500581	DO NOT SCALE THIS DRAWING	DRN BY: LMM DATE: 06/06/08 SHEET: 10F1