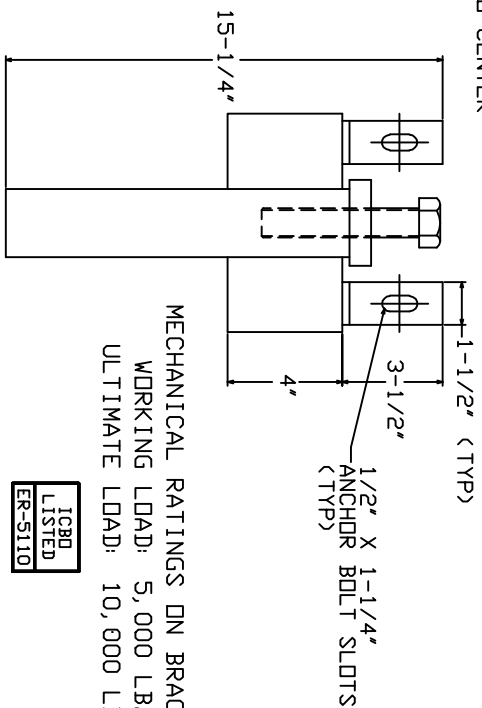
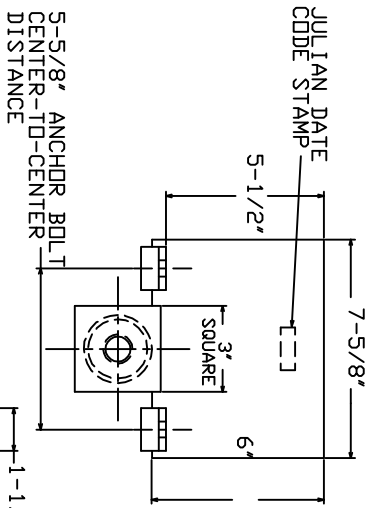
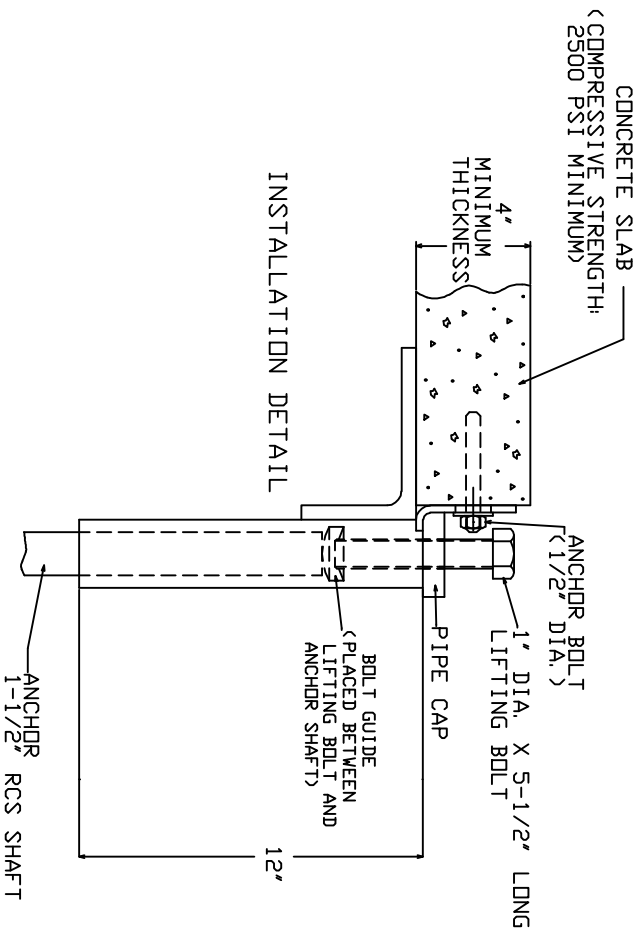


-NOTES-

1. HOT DIP GALVANIZE PER ASTM A153-(LATEST REVISION).
2. BRACKET IS ASSEMBLED WITH THE 1" DIA. LIFTING BOLT INSTALLED INTO PIPE CAP.
3. BRACKET IS DESIGNED TO BE USED WITH A 1-1/2" ROUND-CORNERED-SQUARE (RCS) SHAFT ANCHOR PIER. INSTALLED VERTICALLY NEXT TO A CONCRETE SLAB.
4. BRACKET IS DESIGNED TO FIT CONCRETE SLABS - 4 INCH MINIMUM THICKNESS. RECOMMENDED SHAFT CUT-OFF LEVEL IS 1 INCH BELOW THE BOTTOM OF THE SLAB FOR MAXIMUM LIFT DISTANCE.
5. DO NOT EXCEED 200 FT.-LB. OF TORQUE ON THE 1" DIA. LIFTING BOLT DURING STABILIZATION OR LIFTING.
6. FOR DETAILED INSTALLATION INSTRUCTIONS, READ CHANCE BULLETIN 01-9401.
7. MATERIAL SPECIFICATIONS:
8. BRACKET BODY: PER ASTM A36.
PIPE: PER ASTM A53 DR A500 STEEL PIPE.
TUBE: PER ASTM A53 DR A500 STEEL PIPE.
BOLT: HEX HEAD BOLT PER SAE J429 GRADE 5.

ALLOWABLE VALUES AND/OR CONDITIONS OF USE CONCERNING MATERIAL PRESENTED IN THIS DOCUMENT.



MECHANICAL RATINGS ON BRACKET:
WORKING LOAD: 5,000 LB.
ULTIMATE LOAD: 10,000 LB.

ICBD LISTED ER-5110
CATALOG NUMBER C150-0239

HUBBELL POWER SYSTEMS	
CHANCE TOLERANCE CHART	
<small>CONFIDENTIAL: THIS DRAWING AND ITS CONTENTS ARE CONFIDENTIAL AND THE PROPERTY OF HUBBELL POWER SYSTEMS. NO PUBLICATION, DISTRIBUTION OR COPIES MAY BE MADE WITHOUT THE WRITTEN CONSENT OF HUBBELL POWER SYSTEMS. UNPUBLISHED. ALL RIGHTS RESERVED UNDER THE COPYRIGHT LAWS.</small>	
TITLE LIGHT DUTY UNDERPINNING BRACKET	SIZE DWG NO. SB SA150-0239
CAT / PART / ASSY NO. C150-0239	DO NOT SCALE THIS DRAWING
DWN BY KSH	DATE 4/30/04
SHEET 1 OF 1	REV E