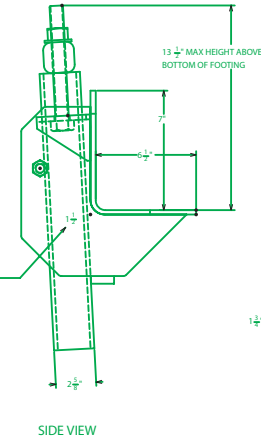
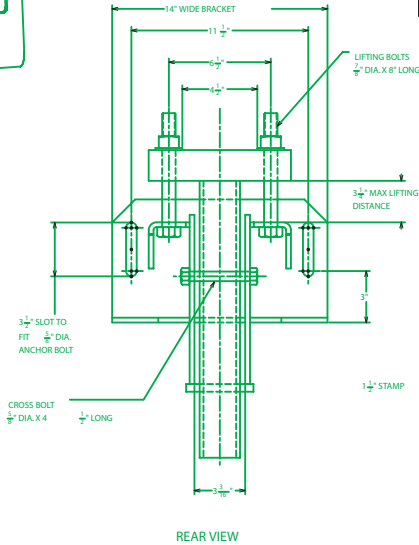


CC150-0298 & CC150-0299 HAVE MINIMUM
MECHANICAL ULTIMATE STRENGTHS OF 80,000 LBS.

ICBO
LISTED
ER-5110

SBCCI
LISTED
ER-9504B

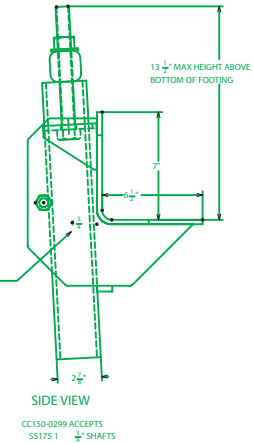


CC150-0298B ACCEPTS
SS5 & SS150 1 1/2\"/>

-NOTES-

1. HOT DIP GALVANIZE PER ASTM A153-LATEST REVISION.
2. ASSEMBLED COMPLETE AS SHOWN IN SIDE VIEW.
3. COVERED BY ONE OR MORE OF THE FOLLOWING UNITED STATES PATENTS:
5,011,336
5,150,148
5,213,444
4. DO NOT EXCEED 145 FT-LBS OF TORQUE ON 7/8\"/>

UNDERPINNING SYSTEM PER PER-BRACKET LOAD RATINGS (SEE NOTE #1)				
ANCHOR TYPE	BRACKET	MINIMUM ULTIMATE STRENGTH	WORKING LOAD 2:1 SAFETY FACTOR	TYPICAL ACHIEVABLE TYPICAL ACHIEVABLE TYPICAL ACHIEVABLE
SS5	CC150-0298	80,000 LB	40,000 LB	20,000 LB
SS150	CC150-0298	80,000 LB	40,000 LB	25,000 LB
SS175	CC150-0299	80,000 LB	40,000 LB	30,000 LB



CC150-0299 ACCEPTS
SS175 1 1/2\"/>

CHANCE®
TOLERANCE CHART



HUBBELL® POWER SYSTEMS

CONFIDENTIAL: THIS DRAWING AND ITS CONTENTS ARE CONFIDENTIAL AND THE EXCLUSIVE PROPERTY OF HUBBELL POWER SYSTEMS. NO PUBLICATION, DISTRIBUTION OR COPIES MAY BE MADE WITHOUT THE WRITTEN CONSENT OF HUBBELL POWER SYSTEMS. HUBBELL POWER SYSTEMS UNPUBLISHED ALL RIGHTS RESERVED UNDER THE COPYRIGHT LAWS.

TITLE

--

STANDARD UNDERPINNING BRACKET

SIZE SB	DWG. NO. SA150-0298	CAT / PART / ASSY NO. SA150-0298	REV B
DO NOT SCALE THIS DRAWING	DRN BY DVH	DATE 3/4/04	SHEET 1 OF 1