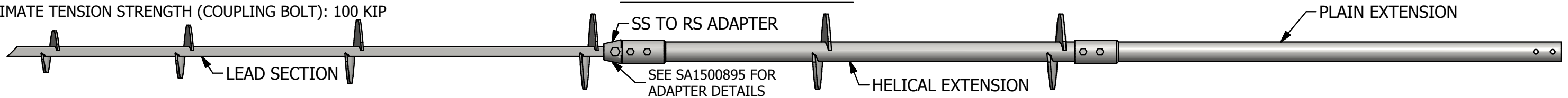


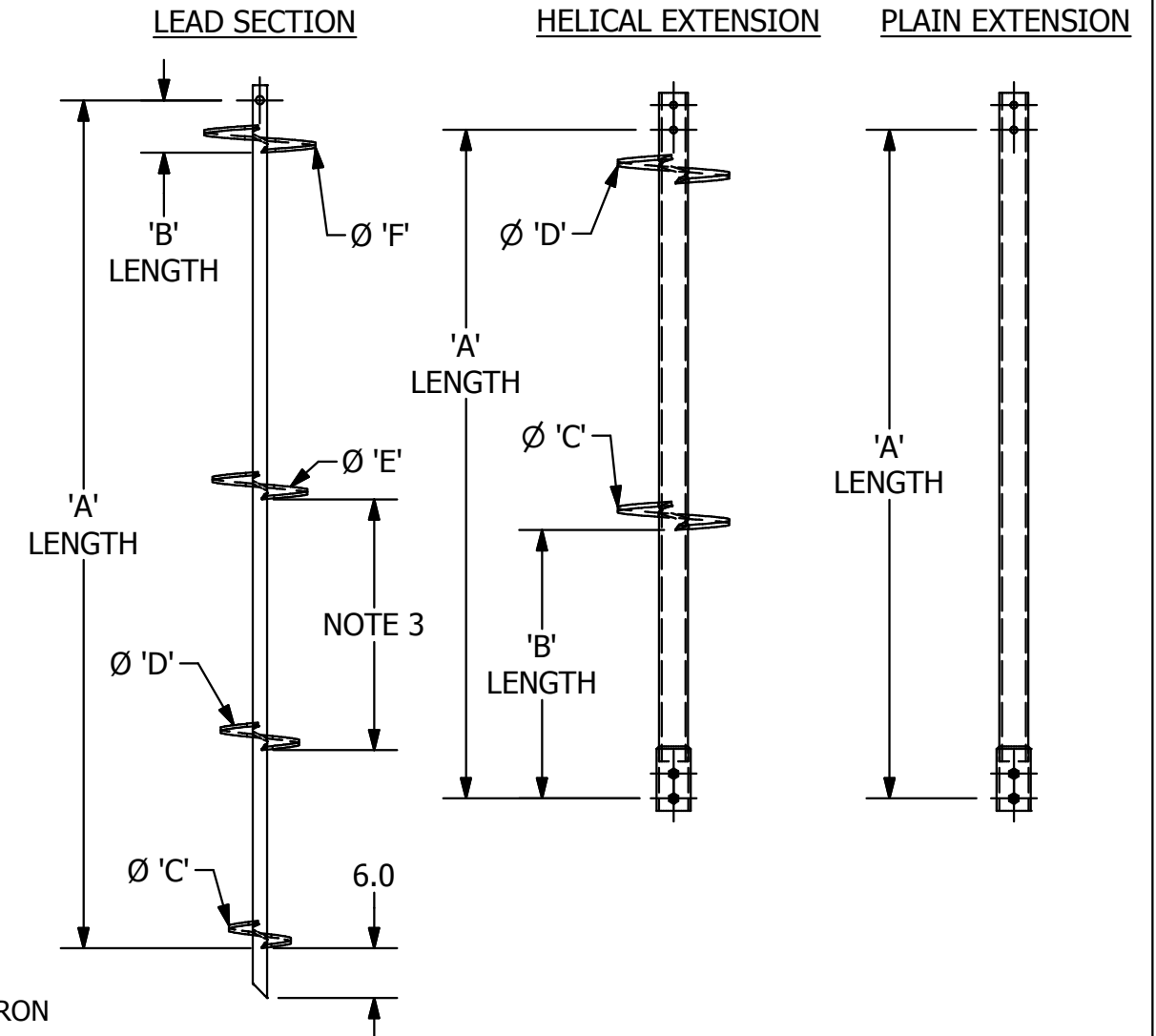
TORQUE STRENGTH RATING: 10,500 FT-LB  
 ULTIMATE CAPACITY\* (TENSION/ COMPRESSION): 73.5 KIP  
 \* BASED ON A TORQUE FACTOR (Kt): 7/FT  
 SINGLE HELIX ULTIMATE STRENGTH: 50 KIP  
 ULTIMATE TENSION STRENGTH (COUPLING BOLT): 100 KIP

# RS3500.300 HELICAL COMBO PILES

## TYPICAL PILE ASSEMBLY



PART NUM	DESCRIPTION	'A'	'B'	'C'	'D'	'E'	'F'
C1500010	LEAD, SS175, 8 X 5FT	58	58	8			
T1500264	LEAD, SS175, 8 X 5FT	58	58	8			
C1500011	LEAD, SS175, 10 X 5FT	58	58	10			
C1100227	LEAD, SS175, 8/10 X 3FT	30	6	8	10		
C1500179	LEAD, SS175, 8/10 X 3FT	30	6	8	10		
C1500012	LEAD, SS175, 8/10 X 5FT	58	34	8	10		
C1500493	LEAD, SS175, 8/10 X 7FT	76	52	8	10		
C1500093	LEAD, SS175, 10/12 X 5FT	58	34	10	12		
T1100730	LEAD, SS175, 14/14 X 7FT	76	34	14	14		
C1100235	LEAD, SS175, 8/10/12 X 5FT	58	6	8	10	12	
C1500180	LEAD, SS175, 8/10/12 X 5FT	58	6	8	10	12	
C1500401	LEAD, SS175, 8/10/12 X 7FT	76	22	8	10	12	
T1100674	LEAD, SS175, 10/12/14 X 7FT	76	10	10	12	14	
C1500402	LEAD, SS175, 10/12/14 X 10FT	122	56	10	12	14	
T1100853	LEAD, SS175 10/10/10 X 7FT	76	16	10	10	10	
C1100505	LEAD, SS175, 14/14/14 X 10FT	122	32	14	14	14	
C1500181	LEAD, SS175, 14/14/14 X 10FT	122	38	14	14	14	
C1100247	LEAD, SS175 8/10/12/14 X 10FT	122	32	8	10	12	14
C1500895	ADAPTER, SS175 TO RS3500						
C1501291	EXTENSION, RS3500.300, 3-1/2FT	38					
C1501240	EXTENSION, RS3500.300, 5FT	56					
C1501241	EXTENSION, RS3500.300, 7FT	80					
C1501242	EXTENSION, RS3500.300, 10FT	116					
C1501293	HELICAL EXTENSION, RS3500.300, 14 X 3-1/2FT	38	27	14			
C1501295	HELICAL EXTENSION, RS3500.300, 14/14 X 7FT	80	31	14	14		



### \* \* NOTES \* \*

- HOT DIP GALVANIZED PER ASTM A123 AND A153 (LATEST REV)
- LEAD AND EXTENSION SECTION LENGTHS AND HELIX SPACINGS ARE NOMINAL
- NOMINAL SPACING BETWEEN HELIX PLATES IS THREE TIMES THE DIAMETER OF THE LOWER HELIX
- PIPE SHAFT MATERIAL PER ASTM A618 OR A500 GRADE B, SQUARE SHAFT MATERIAL PER A29 & A576 MOD, ADAPTER MATERIAL DUCTILE IRON
- HELIX MATERIAL LOW CARBON STEEL MEETING THE GENERAL REQUIREMENTS OF AISI OR ASTM A572, A656, OR A1018
- PIPE SHAFT COUPLING MATERIAL PER ASTM A513 DOM, MINIMUM YIELD OF 65KSI
- COUPLING BOLTS: PIPE - 3/4" DIAMETER X 5-3/4" LONG HEX HEAD PER SAE J425 GRADE 5, SQUARE SHAFT - 7/8" DIAMETER X 3-1/2" LONG HEX HEAD PER ASTM A193 GRADE B7
- MANUFACTURER TO HAVE IN EFFECT INDUSTRY RECOGNIZED WRITTEN QUALITY CONTROL FOR ALL MATERIALS AND MANUFACTURING PROCESSES
- ALL WELDING TO BE DONE BY WELDERS CERTIFIED UNDER SECTION 5 OF THE AWS CODE D1.1
- EXTENSIONS MUST BE PROVIDED WITH A WELDED SLEEVE ON ONE END WITH MATERIAL PER NOTE 6
- SEE ICC EVALUATION SERVICE INC. EVALUATION REPORT #ESR-2794 FOR ALLOWABLE VALUES AND/OR CONDITIONS OF USE CONCERNING MATERIAL PRESENTED IN THIS DOCUMENT

<b>CHANCE®</b>		<b>HUBBELL®</b> HUBBELL POWER SYSTEMS, Inc. POWER SYSTEMS, INC.	
CONFIDENTIAL: THIS DRAWING AND ITS CONTENTS ARE CONFIDENTIAL AND THE EXCLUSIVE PROPERTY OF HUBBELL POWER SYSTEMS. NO PUBLICATION, DISTRIBUTION OR COPIES MAY BE MADE WITHOUT THE WRITTEN CONSENT OF HUBBELL POWER SYSTEMS. HUBBELL POWER SYSTEMS UNPUBLISHED ALL RIGHTS RESERVED UNDER THE COPYRIGHT LAWS.			
TITLE <b>RS3500.300 COMBO PILES ICC-ES (AC-358)</b>		SIZE <b>SB</b>	REV -
CAT / PART / ASSY NO. <b>SEE CHART</b>	DWG NO. <b>SA1501241</b>	DO NOT SCALE THIS DRAWING	DRN BY TMK
DATE 11/5/14	SHEET 1 OF 1		