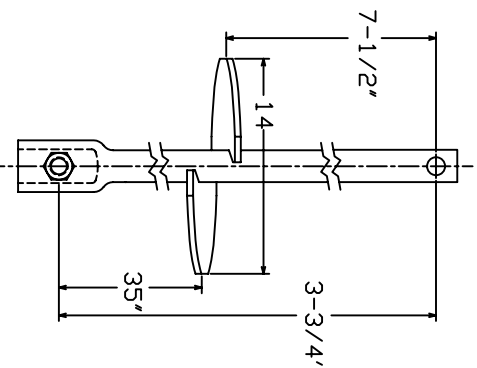
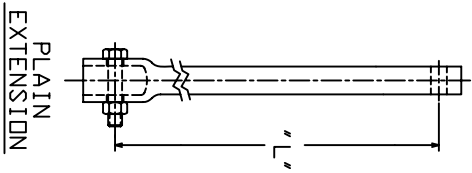
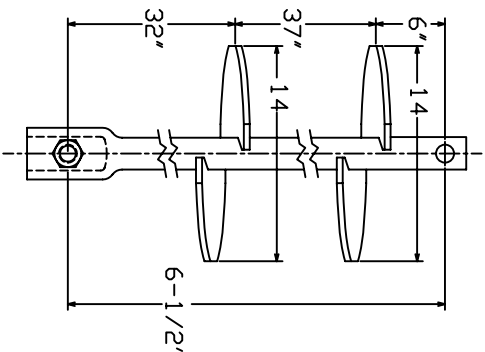


SS200  
EXTENSIONS AND TERMINATIONS

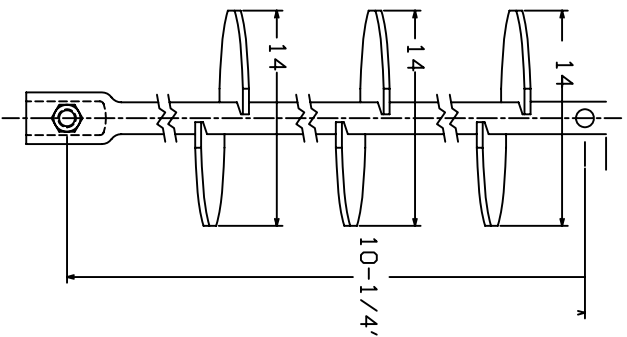
TORQUE STRENGTH RATING-16,000 FT-LB  
ULTIMATE CAPACITY\* (TENSION/COMPRESSION)-150 KIP  
\*BASED ON MECHANICAL STRENGTH OF COUPLING BOLT



C110-0577 (GALV)  
C114-0220 (UN GALV)



C110-0581 (GALV)  
C114-0224 (UN GALV)



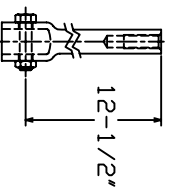
C110-0586 (GALV)  
C114-0231 (UN GALV)

CAT. NO.	FINISH	"L"
C110-0563	GALV	37
C114-0209	UN GALV	37
C110-0564	GALV	58
C114-0210	UN GALV	58
C110-0565	GALV	80
C114-0211	UN GALV	80
C110-0566	GALV	123
C114-0212	UN GALV	123

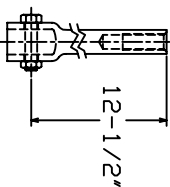
==NOTES==

1. LEAD AND EXTENSION SECTION LENGTHS AND HELIX SPACINGS ARE NOMINAL.
2. SHAFT MATERIAL-HOT ROLLED ROUND-CORNERED-SQUARE (RCS) SOLID STEEL BARS.
3. COUPLING BOLT 1.125-7UNC HEX HEAD BOLT PER ASTM A193 GRADE B7 WITH HEX JAM NUT.
4. MANUFACTURER TO HAVE IN EFFECT INDUSTRY RECOGNIZED WRITTEN QUALITY CONTROL FOR ALL MATERIALS AND MANUFACTURING PROCESSES.
5. ALL WELDING TO BE DONE BY WELDERS CERTIFIED UNDER SECTION 5 OF THE AWS D1.1.

1" DYWIDAG  
BAR ADAPTER  
C114-0227 (GALV)



1-1/4" DYWIDAG  
BAR ADAPTER  
C114-0256 (UN GALV)



<p>CONSENTIVE THIS DRAWING AND THE EXCLUSIVE PROPERTY OF HUBBELL POWER SYSTEMS. NO PART OF THIS DRAWING OR SPECIFICATIONS OR DIMENSIONS MAY BE MADE WITHOUT THE WRITTEN CONSENT OF HUBBELL POWER SYSTEMS. UNPUBLISHED INFORMATION UNDER THE PROVISIONS OF THE PATENT LAWS.</p>	
<p>CHANCE TOLERANCE CHART</p>	<p>HUBBELL POWER SYSTEMS</p>
<p>SS200</p>	<p>EXTENSIONS</p>
<p>SIZE (IMP. AND MET.)</p>	<p>DATE 3/22/05</p>
<p>SCALE</p>	<p>BY KSH</p>
<p>NO. OF SHEETS</p>	<p>DATE 3/22/05</p>
<p>DESIGNED BY</p>	<p>SHEET 1/1</p>
<p>REV</p>	