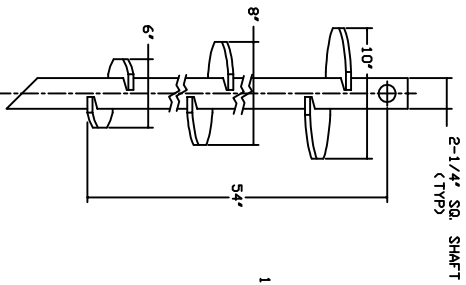
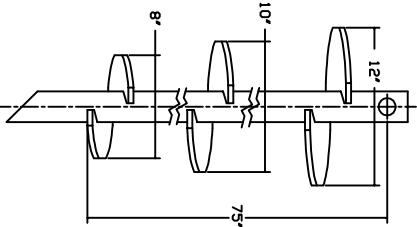


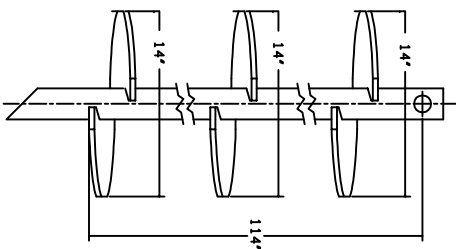
TORQUE STRENGTH RATING-23,000 FT.-LB
 ULTIMATE CAPACITY * (TENSION/COMPRESSION)-200 KIP
 * BASED ON MECHANICAL STRENGTH OF COUPLING BOLT.



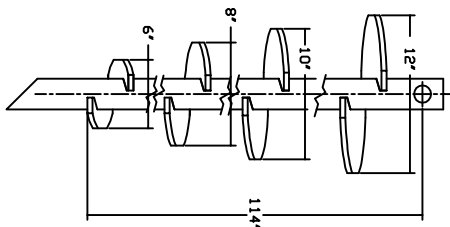
LEAD SECTION
 C110-0543 (GALV)
 C114-0187 (UN GALV)



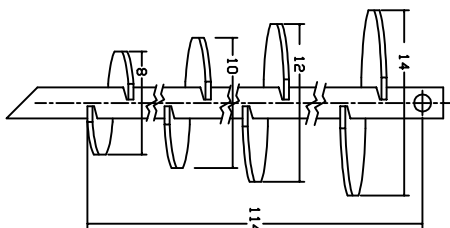
LEAD SECTION
 C110-0544 (GALV)
 C114-0188 (UN GALV)



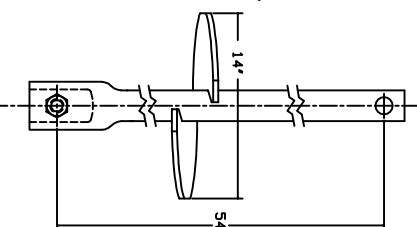
LEAD SECTION
 C110-0545 (GALV)
 C114-0190 (UN GALV)



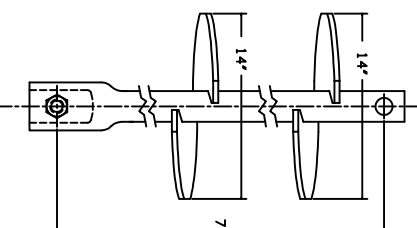
LEAD SECTION
 C110-1012 (UN GALV)



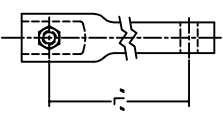
LEAD SECTION
 C114-0189 (UN GALV)



HELICAL EXT.
 C110-0650 (GALV)
 C114-0238 (UN GALV)

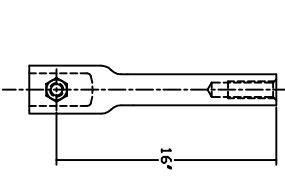


HELICAL EXT.
 C110-0652 (GALV)
 C114-0232 (UN GALV)

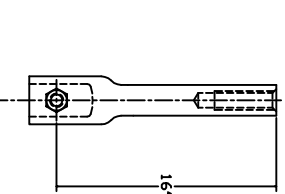


PLAIN
 EXTENSION

CAT. NO.	FINISH	"	"
C110-0646	GALV	54"	
C114-0244	UN GALV	54"	
C110-0647	GALV	74"	
C114-0245	UN GALV	74"	



1-1/4" DYWIDAG
 BAR ADAPTER
 C112-0262



1-3/8" DYWIDAG
 BAR ADAPTER
 C114-0250 (GALV)

- =NOTES=
1. LEAD AND EXTENSION SECTION LENGTHS AND HELIX SPACINGS ARE NOMINAL.
 2. NOMINAL SPACING BETWEEN HELIX PLATES IS THREE TIMES THE DIAMETER OF THE LOWER HELIX.
 3. COUPLING BOLT IS 1.25"-7UNC HEX HEAD BOLT PER ASTM A193 GRADE B7 WITH HEX JAM NUT.
 4. MANUFACTURER TO HAVE IN EFFECT INDUSTRY RECOGNIZED WRITTEN QUALITY CONTROL FOR ALL MATERIALS AND MANUFACTURING PROCESSES.
 5. ALL WELDING TO BE DONE BY WELDERS CERTIFIED UNDER SECTION 5 OF THE AWS CODE D11.

CHANCE TOLERANCE CHART * 1/20 TYPICAL DIMENSIONS ** 1/30 TYPICAL DIMENSIONS *** 1/40 TYPICAL DIMENSIONS AND CASTING DIMENSIONS		HUBBELL POWER SYSTEMS SSS225	
CONSTITUTE THIS DRAWING AND THE CONTENTS HEREOF AS THE SOLE AND EXCLUSIVE PROPERTY OF HUBBELL POWER SYSTEMS. NO PUBLICATION, DISTRIBUTION OR OTHER USE OF THIS DRAWING OR ITS CONTENTS BY ANY OTHER PARTY IS PERMITTED WITHOUT THE WRITTEN CONSENT OF HUBBELL POWER SYSTEMS UNPUBLISHED. ALL RIGHTS RESERVED UNDER THE COPYRIGHT LAWS.		ANCHORS AND EXTENSIONS DWG NO. SB SA110-10020 CAT / PART / ASSY NO. SEE CHART REV G	
DO NOT SCALE THIS DRAWING	DRN BY JWH	DATE 10/9/12	SHEET 1/1