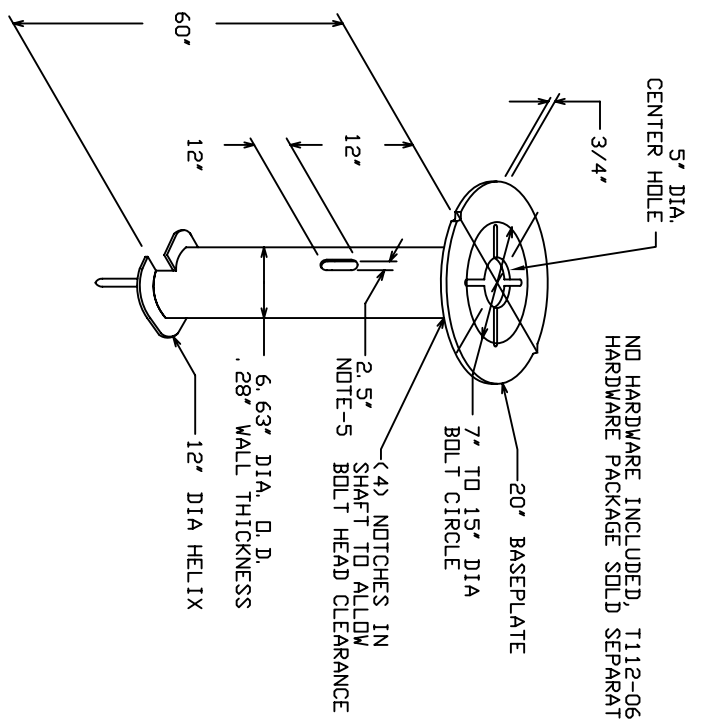


RECOMMENDED TORQUE
 NO GREATER THAN
 10,000 FT. LB.



NO HARDWARE INCLUDED, T112-0633
 HARDWARE PACKAGE SOLD SEPARATELY

ALL RADIAL SECTIONS
 NORMAL TO AXIS $\pm 3^\circ$

ALL RADIAL SECTIONS
 NORMAL TO AXIS $\pm 3^\circ$

HELIX MUST BE FORMED BY MATCHING METAL DIE
 (SIDE VIEW OF TRUE HELICAL FORM)

T112-0633 HARDWARE PACKAGE INCLUDES:
 (4) 3/4" X 3-1/2" GALV. CARRIAGE BOLT FULL THREADS
 (4) ROUND FLAT WASHERS,
 (4) 3/4" NUTS,
 (4) LOCK WASHERS,
 (4) 3" X 3" X 1/4" TAPPED RETAINING WASHER

LIGHTING FOUNDATION
 CAT. NO. T112-0627

-NOTES-

1. FINISH: HOT DIP GALVANIZE PER ASTM-A153 (LATEST REVISION). BASEPLATE TO BE PERPENDICULAR TO SHAFT AXIS ($\pm 1^\circ$) AND HOLE CENTERLINE CONCENTRIC ($\pm .188$) TO SHAFT AXIS.
2. STENCIL MIN. 1/2 IN. LETTERS MANUFACTURER'S NUMBER AFTER GALVANIZING.
3. PILOT POINT AND SHAFT AXES TO BE CONCENTRIC ($\pm .125$ FIM) AND IN LINE ($\pm 2^\circ$).
4. FLAME CUT TWO SLOTS IN SHAFT PERPENDICULAR TO THE BASEPLATE. PREHEAT, TUMBLEBLAST, HANDGRIND, AND CLEAN BASEPLATE, HELIX, AND PILOT POINT ON ALL WELDED AREAS.
5. FLAMECUT IRREGULARITIES PERMISSIBLE: (1) VALLEYS NOT TO EXCEED 3/32 IN. BELOW NOMINAL SURFACE LEVEL, (2) PEAKS OR POSITIVE IRREGULARITIES NOT TO EXCEED 1/32 IN. ABOVE NOMINAL SURFACE LEVEL OR INTERSECTIONS OF NOMINAL SURFACES.
6. MANUFACTURER TO HAVE IN EFFECT INDUSTRY RECOGNIZED WRITTEN QUALITY CONTROL FOR ALL MATERIALS AND MANUFACTURING PROCESSES. ALL MATERIAL IS TO BE NEW, UNUSED AND MILL TRACEABLE MEETING THE FOLLOWING SPECIFICATIONS:
7. BASEPLATE: ASTM A36-(LATEST REVISION) STRUCTURAL STEEL
 (CONFORM TO ASHTO TECH. BUL. #270).
8. SHAFT: ASTM A252-(LATEST REVISION) GRADE 2, STEEL PIPE PILES.
 ALTERNATE MATERIAL: ASTM A53-(LATEST REVISION) TYPE E DR S, GRADE B, STEEL PIPE OR ASTM A500-(LATEST REVISION) GRADE B, STRUCTURAL STEEL TUBING.
9. HELIX: ASTM A635-(LATEST REVISION) 3/8" THICK HOT ROLLED STEEL PLATE OR COIL.
10. PILOT POINT: ASTM A575-(LATEST REVISION) 1-1/4" DIAMETER HOT ROLLED STEEL BAR.
11. BASEPLATE IS PERMANENTLY STAMPED WITH MANUFACTURER'S IDENTIFICATION 'ABC' IN 1/2" LETTERS AND DATE CODE IN 1/4" LETTERS.
11. BASEPLATE PERMANENTLY MARKED TO INDICATE CABLEWAY OPENING IN SHAFT.

<p>CONFIDENTIAL: THIS DRAWING AND ITS EXCLUSIVE PROPERTY OF HUBBELL POWER SYSTEMS. NO PUBLICATION, DISTRIBUTION OR COPIES MAY BE MADE WITHOUT THE WRITTEN CONSENT OF HUBBELL POWER SYSTEMS UNPUBLISHED. ALL RIGHTS RESERVED UNDER THE COPYRIGHT LAWS.</p>		<p>CHANCE</p>	
		<p>HUBBELL POWER SYSTEMS</p>	
<p>TITLE</p> <p>LIGHTING FOUNDATION</p>		<p>REV</p> <p>C</p>	
<p>DO NOT SCALE THIS DRAWING</p>	<p>SIZE</p> <p>SB</p>	<p>DWG NO.</p> <p>SA112-0627</p>	<p>DWN BY</p> <p>KSH</p>
		<p>DATE</p> <p>11/5/04</p>	<p>SHEET</p> <p>1/1</p>