

CATALOG NUMBER		ADAPTER	COUPLER
(1) W/D PULLING EYE	(2) W/ PULLING EYE		
C110-0041	N/A	DVALEYE	SS5/150
C102-0023	N/A	THIMBLEYE®	SS5/150
T110-0311	N/A	THIMBLEYE®	SS175
T110-0312	N/A	THIMBLEYE®	SS200
C102-0024A	C102-0024	TWINEYE®	SS5/150
C102-0025A	C102-0025	TRIPLEYE®	SS5/150
T110-0964A	T110-0964	TWINEYE®	SS175
T110-0465A	T110-0465	TRIPLEYE®	SS175
T110-0629A	T110-0629	TRIPLEYE®	SS200

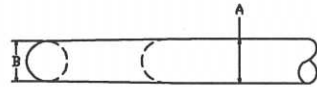
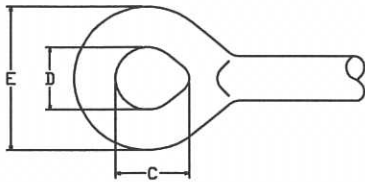
* * NOTES * *

- HOT DIP GALVANIZE PER ASTM A153 (LATEST REVISION).
- BOLT PER ASTM A325 TYP 1 (LATEST REVISION).
- BOLT PER ASTM A193, GRADE B7 (LATEST REVISION).
- MAXIMUM DIAMETER GUY STRANDS ARE TWICE R AND R1.
- PULLING EYE FITS CHANCE STANDARD HOIST HOOKS 2 TON AND LESS. PULLING EYE RATED AT AN ULTIMATE LOAD OF 12,000LB.
- ALL FORGED GUY ADAPTERS ARE 18" END TO END.

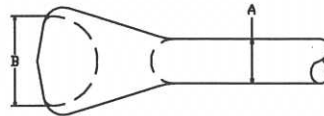
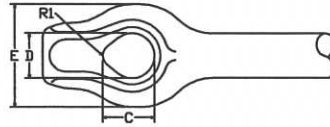
CHANCE TOLERANCE CHART	HUBBELL POWER SYSTEMS		
CONFIDENTIAL THIS DRAWING AND ITS CONTENTS ARE CONFIDENTIAL AND THE EXCLUSIVE PROPERTY OF HUBBELL POWER SYSTEMS. NO PUBLICATION, DISTRIBUTION OR COPIES MAY BE MADE WITHOUT THE WRITTEN CONSENT OF HUBBELL POWER SYSTEMS. HUBBELL POWER SYSTEMS UNPUBLISHED ALL RIGHTS RESERVED UNDER THE COPYRIGHT LAWS.	SIZE C	DWG NO. SA102-0024	REV D
DO NOT SCALE THIS DRAWING	DRN BY THK	DATE 11/2/12	SHEET 1/2

ADAPTERS

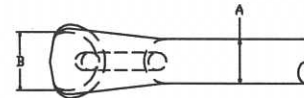
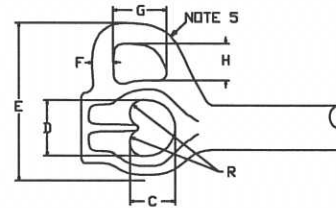
OVALEYE



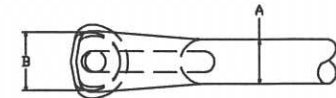
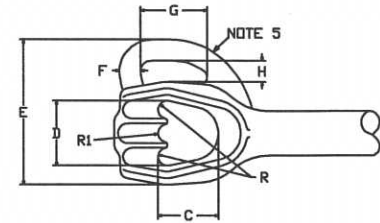
THIMBLEYE®



TWINEYE®

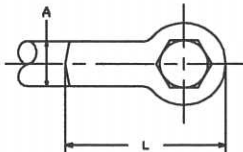


TRIPLEYE®

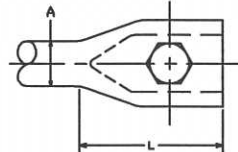


COUPLER

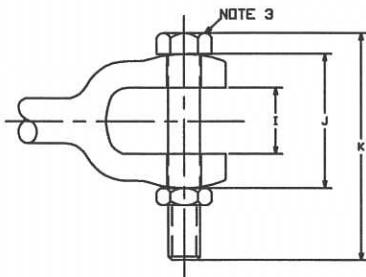
CLEVIS



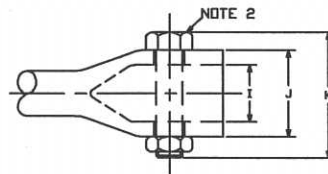
SOCKET



NOTE 3



NOTE 2



DIM.	ADAPTER					
	(1) W/O PULLING EYE			(2) W/ PULLING EYE		
	OVALEYE	THIMBLEYE®	TWINEYE®	TRIPLEYE®	TWINEYE®	TRIPLEYE®
A	1.25	1.25	1.25	1.25	1.25	1.25
B	1.06	2.50	1.62	1.62	1.62	1.62
C	2.25	1.44	1.24	1.69	1.24	1.69
D	1.75	1.25	1.56	1.82	1.56	1.82
E	3.90	2.88	2.12	2.30	4.16	4.05
F	N/A	N/A	N/A	N/A	0.50	0.58
G	N/A	N/A	N/A	N/A	1.48	1.77
H	N/A	N/A	N/A	N/A	1.00	1.00
R	N/A	0.33	0.38	0.25	0.38	0.25
R1	N/A	N/A	N/A	0.28	N/A	0.28

COUPLER

DIM.	COUPLER		
	SOCKET	CLEVIS	
	SS5/150	SS175	SS200
A	1.25	1.25	1.25
I	1.59	1.84	2.17
J	2.41	3.74	3.92
K	3.5	6.33	6.33
L	4.0	4.39	4.34

CHANCE TOLERANCE CHART	HUBBELL POWER SYSTEMS POWER SYSTEMS, INC.			
	TITLE FORGED GUY ADAPTER W/ PULLING EYE			
CONFIDENTIAL THIS DRAWING AND ITS CONTENTS ARE CONFIDENTIAL AND THE EXCLUSIVE PROPERTY OF HUBBELL POWER SYSTEMS. NO PUBLICATION, DISTRIBUTION OR COPIES MAY BE MADE WITHOUT THE WRITTEN CONSENT OF HUBBELL POWER SYSTEMS. HUBBELL POWER SYSTEMS UNPUBLISHED ALL RIGHTS RESERVED UNDER THE COPYRIGHT LAWS.	SIZE C	DWG NO. SA102-0024	CAT / PART / ASBY NO. SEE CHART	REV D
DO NOT SCALE THIS DRAWING	DRN BY THK	DATE 11/2/12	SHEET 2/2	