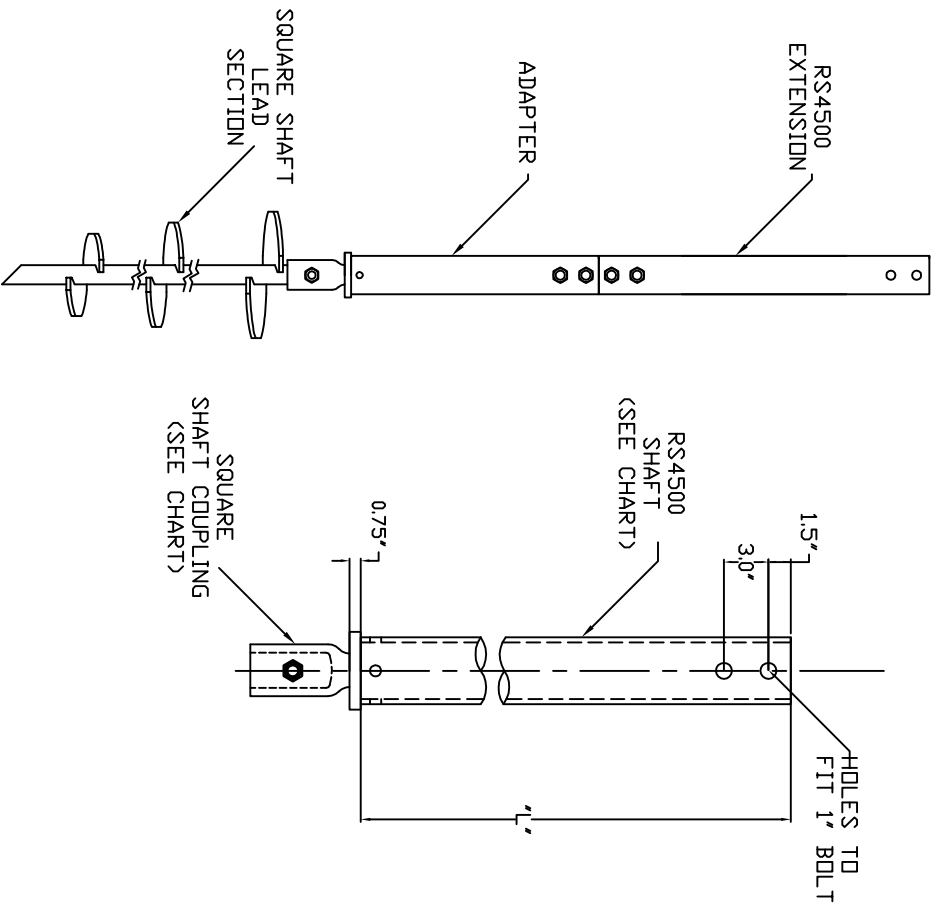


SQUARE SHAFT TO RS4500 ADAPTERS

=NOTES=

1. ADAPTER LENGTHS ARE NOMINAL.
2. FINISH: HOT DIP GALVANIZED PER ASTM 153 - (LATEST REVISION).
3. COUPLING BOLTS ARE PER ASTM A193 GRADE B7 WITH HEX JAM NUT.
4. PIPE SHAFT MATERIAL: STEEL PIPE PER ASTM A500 GRADE B.
5. MANUFACTURER TO HAVE IN EFFECT INDUSTRY RECOGNIZED WRITTEN QUALITY CONTROL.
6. ALL WELDING TO BE DONE BY WELDERS CERTIFIED UNDER SECTION 5 OF THE AWS CODE D11.



CATALOG NUMBER	ADAPTS		ULT. TORQUE (FT-LBS)	'L'
	SQUARE SHAFT (SS)	ROUND SHAFT (RS)		
C1071810	SS225	RS4500.337	21,000	29'
C1071958	SS200	RS4500.337	16,000	29'
C1071959	SS225	RS4500.237	19,000	29'
C1071960	SS200	RS4500.237	16,000	29'
C1071961	SS225	RS4500.337	21,000	125'
C1071962	SS200	RS4500.337	16,000	125'

TYPICAL INSTALL

CHANCE TOLERANCE CHART XXX X .000 TRAIL SIZE DIMENSIONS XXX X .000 CASTING DIMENSIONS		HUBBELL POWER SYSTEMS	
CONSENT: THIS DRAWING AND ITS CONTENTS ARE THE PROPERTY OF HUBBELL POWER SYSTEMS. NO PUBLICATION, DISTRIBUTION OR COPIES MAY BE MADE WITHOUT THE WRITTEN CONSENT OF HUBBELL POWER SYSTEMS UNPUBLISHED. ALL RIGHTS RESERVED UNDER THE COPYRIGHT LAWS.		TITLE SS TO RS ADAPTER	
DO NOT SCALE THIS DRAWING	DWG NO. SB1 SA1071810	DRN BY JVH	DATE 9/5/14
REV B	CAT / PART / ASSY NO. C1071810	SHEET 1/1	