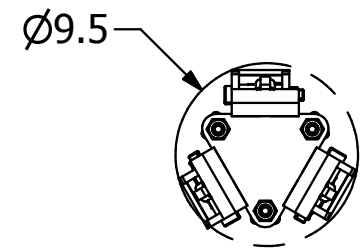
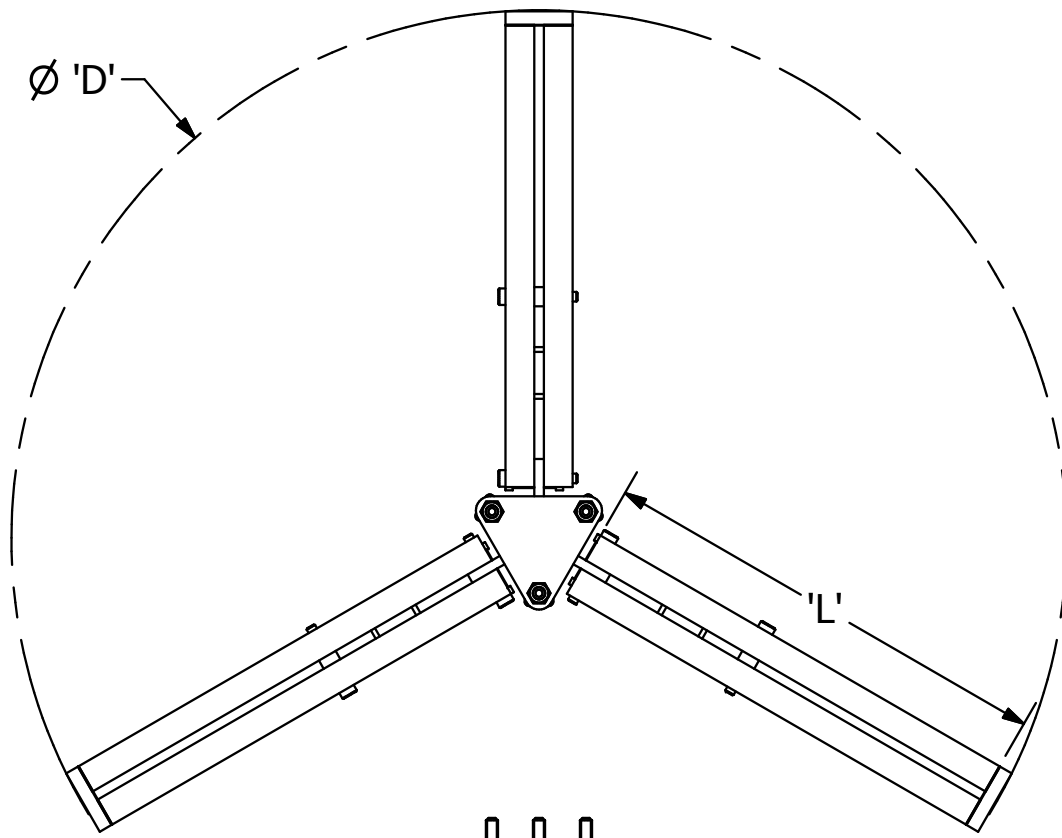


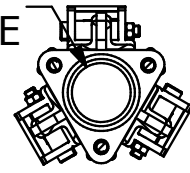
EXPANDED

COLLAPSED

* * NOTES * *



MATES 'A' SIZE PIPE



SECTION A-A

1. MAT'L:

- BEARING PLATE: PER ASTM A572 GRADE 50
- ARM: PER ASTM A36
- SUPPORT: PER ASTM A36
- CENTRAL HUB: PER ASTM A36
- THREADED ROD: PER ASTM A576

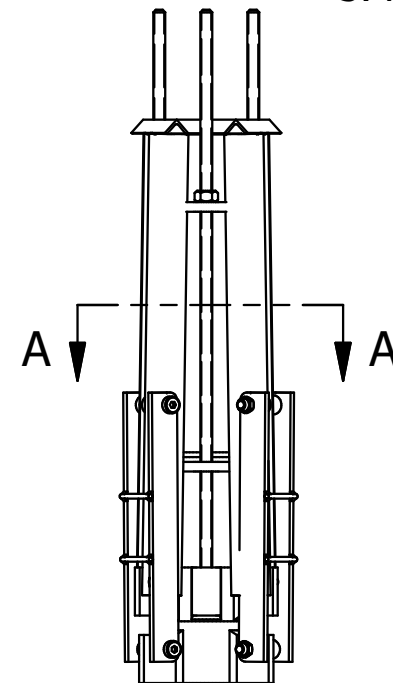
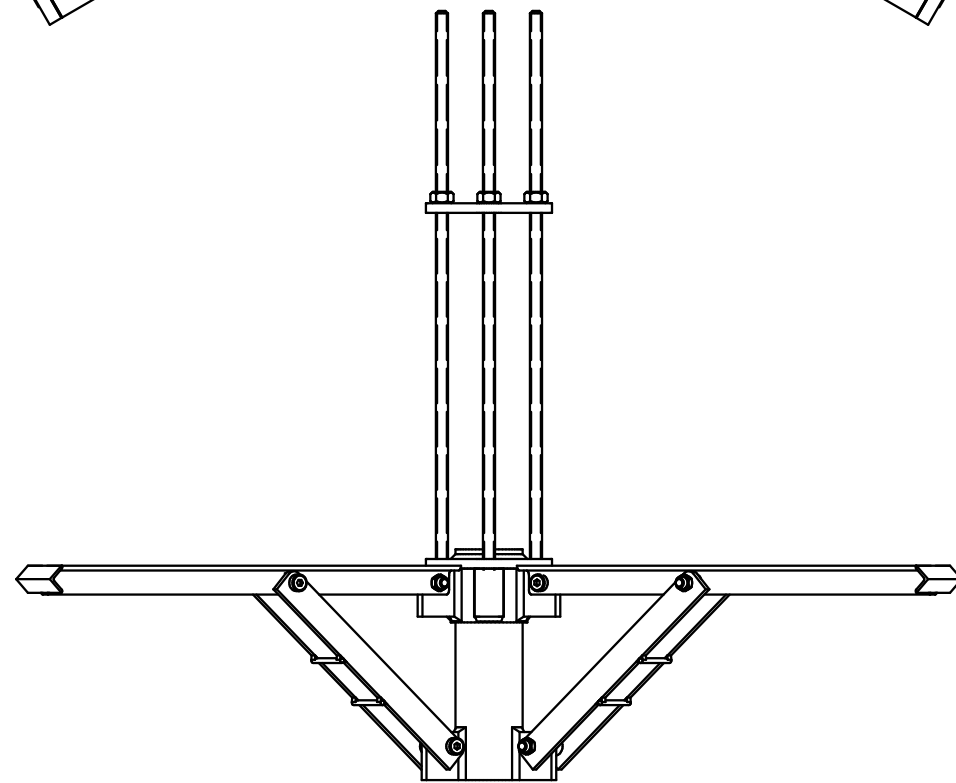
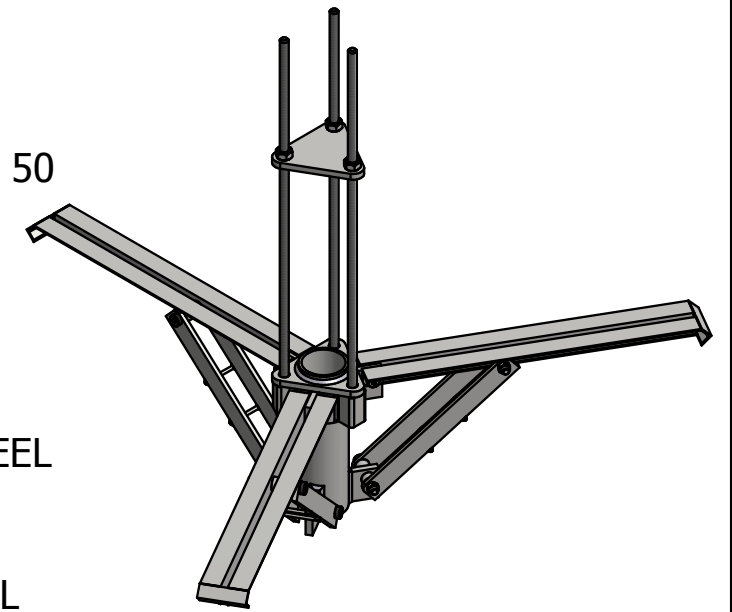
2. FINISH:

- BEARING PLATE: BLACK MILL FINISH STEEL
- ARM: BLACK MILL FINISH STEEL
- SUPPORT: BLACK MILL FINISH STEEL
- CENTRAL HUB: BLACK MILL FINISH STEEL
- THREADED ROD: HOT DIP GALVANIZED PER ASTM A153

3. RECOMMENDED ANCHOR SHAFT CUT OFF 1 INCH ABOVE SLAB BOTTOM PLUS LIFTING HEIGHT. CUT SHAFT PARALLEL WITH SLAB BOTTOM.

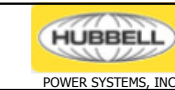
4. BEARING PLATE INSTALLATION TOOL IS CATALOG NUMBER C3031763

5. REFER TO BULLETIN NUMBER 'TD 04 085 E' FOR INSTRUCTIONS FOR INSTALLATION



PART NUM	DESCRIPTION	A	L	D	ULTIMATE LOAD (KIP)	WORKING LOAD (KIP)
C1501339	ISB-24	RS2875	24	56	57	28

CHANCE®



HUBBELL POWER SYSTEMS, Inc.

CONFIDENTIAL: THIS DRAWING AND ITS CONTENTS ARE CONFIDENTIAL AND THE EXCLUSIVE PROPERTY OF HUBBELL POWER SYSTEMS. NO PUBLICATION, DISTRIBUTION OR COPIES MAY BE MADE WITHOUT THE WRITTEN CONSENT OF HUBBELL POWER SYSTEMS. HUBBELL POWER SYSTEMS UNPUBLISHED ALL RIGHTS RESERVED UNDER THE COPYRIGHT LAWS.

TITLE
INTERIOR SLAB BRACKET

SIZE SB	CAT / PART / ASSY NO. SEE CHART	DWG NO. SA1501339	REV -
DO NOT SCALE THIS DRAWING	DRN BY TMK	DATE 10/7/14	SHEET 1 OF 1