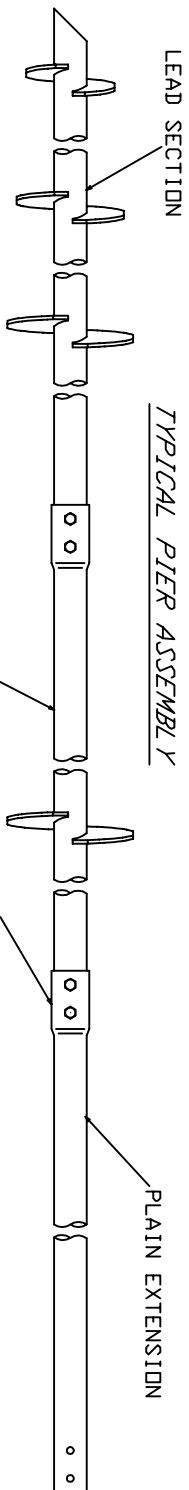


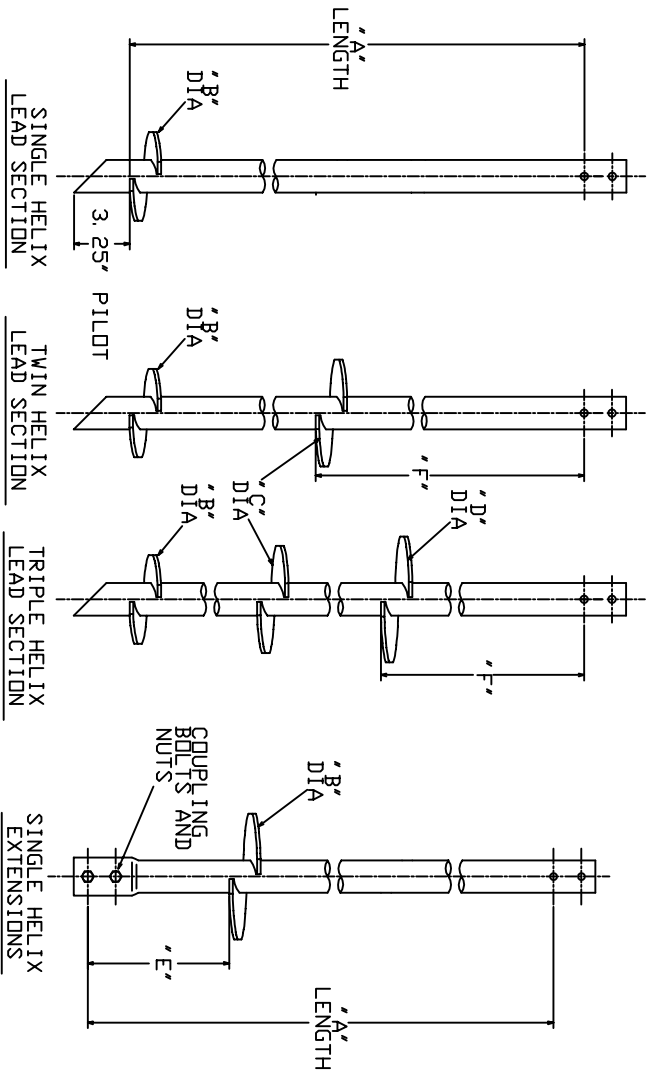
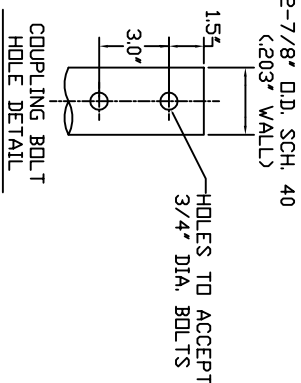
RS2875. 203 MULTI-HELIX LEADS

TORQUE STRENGTH RATING-5,500 FT-LB
 ULTIMATE CAPACITY* (TENSION/COMPRESSION) 49 KIP
 *BASED ON TORQUE FACTOR OF $(Kt)=9$



LEAD SECTIONS					
CAT. NO.	"A"	"B"	"C"	"D"	"E"
C2784507	76"	10"	12"	14"	10"
C2784511	76"	14"	12"		10"
C2784505	57"	10"	12"	27"	
C2784514	57"	8"	10"	12"	5"
C2784506	76"	10"	12"	46"	
C2784503	57"	12"			
C2784504	57"	10"			
C2784515	118"	14"			
C2784512	57"	8"	10"	33"	
C2784509	76"	12"			
C2784513	76"	8"	10"	52"	

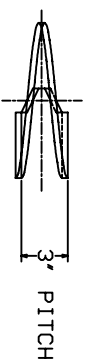
HELICAL EXTENSIONS			
CAT. NO.	"A"	"B"	"E"
C2784501	63"	14"	20"



-NOTES-

- HOT DIP GALVANIZED PER ASTM 153-(LATEST REVISION)
- LEAD AND EXTENSION SECTION LENGTHS AND HELIX SPACINGS ARE NOMINAL,
- NOMINAL SPACING BETWEEN HELIX PLATES IS THREE TIMES THE DIAMETER OF THE LOWER HELIX.
- HELIX MATERIAL LOW CARBON STEEL MEETING THE GENERAL REQUIREMENTS OF AISI,
- DR ASTM A572, A656, DR A1018, 3/8" THICK.
- PIPE SHAFT MATERIAL 2.5" NOMINAL, SCHEDULE 40 WALL THICKNESS PER ASTM A500 GRADE B.
- MANUFACTURER TO HAVE IN EFFECT INDUSTRY RECOGNIZED WRITTEN QUALITY CONTROL FOR ALL MATERIALS AND MANUFACTURING PROCESSES.
- ALL WELDING TO BE DONE BY WELDERS CERTIFIED UNDER SECTION 5 OF THE AWS CODE D1. 1.
- FOR PLAIN EXTENSIONS REFER TO DRAWING SA278-4500.

HELIX MUST BE FORMED BY MATCHING METAL DIE
 (SIDE VIEW)



CHANCE HUBBELL POWER SYSTEMS

CONFIDENTIAL: THIS DRAWING AND ITS CONTENTS ARE CONFIDENTIAL AND THE INFORMATION CONTAINED HEREIN IS NOT TO BE DISTRIBUTED OR COPIES MAY BE MADE WITHOUT THE WRITTEN PERMISSION OF HUBBELL POWER SYSTEMS UNPUBLISHED WORKS ARE RESERVED UNDER THE COPYRIGHT LAWS.

DO NOT SCALE THIS DRAWING

SIZE: DWG NO. SCSA2784507

CAT. / PART / ASSY. NO. SEE CHART

REV. A

DATE: 12/29/09 | SHEET 1/1