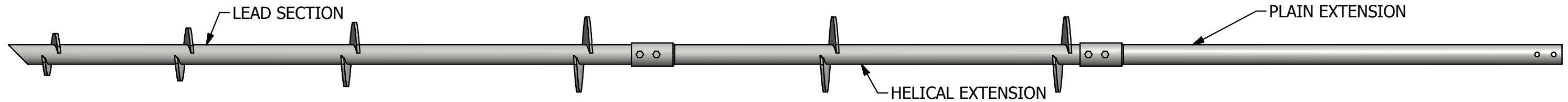


TORQUE STRENGTH RATING - 12,500 FT-LB  
 ULTIMATE CAPACITY\* (TENSION/ COMPRESSION) - 87.5 KIP  
 \* BASED ON A TORQUE FACTOR (Kt) - 7/FT  
 SINGLE HELIX ULTIMATE STRENGTH - 50 KIP  
 ULTIMATE TENSION STRENGTH (COUPLING BOLT) - 120 KIP

# RS3500.300 HELICAL PILES

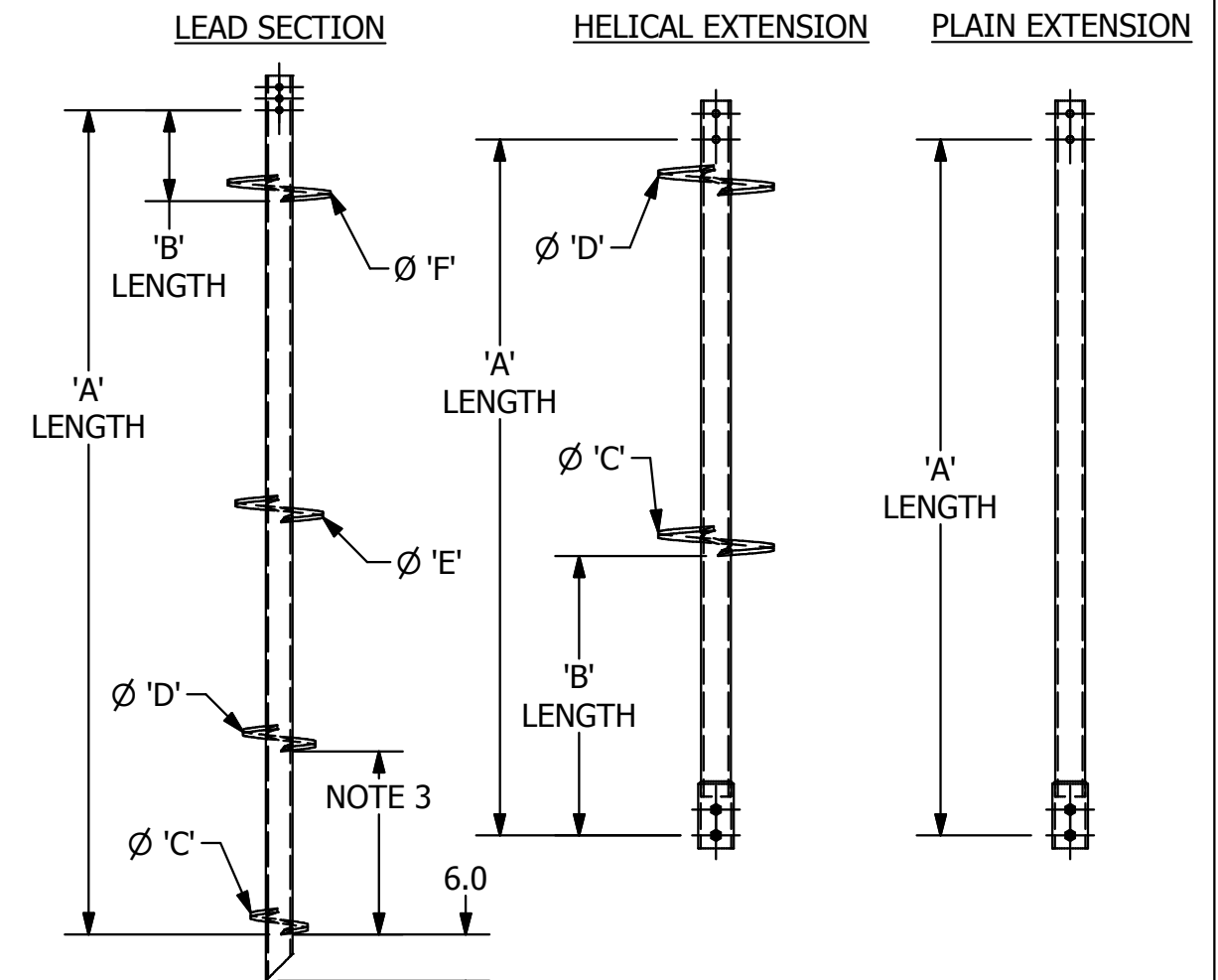
## TYPICAL PILE ASSEMBLY



PART NUM	DESCRIPTION	'A'	'B'	'C'	'D'	'E'	'F'
C1071629	LEAD, RS3500.300, 8X7FT	75	75	8			
T1071315	LEAD, RS3500.300, 8X10FT	117	117	8			
T1070813	LEAD, RS3500.300, 10X7FT	75	75	10			
C1500021	LEAD, RS3500.300, 12X7FT	75	75	12			
C1500022	LEAD, RS3500.300, 14X7FT	75	75	14			
C1500023	LEAD, RS3500.300, 10/12X7FT	75	45	10	12		
T1070812	LEAD, RS3500.300, 10/12X10FT	117	79	10	12		
C1070563	LEAD, RS3500.300, 8/10/12X7FT	75	21	8	10	12	
C1070564	LEAD, RS3500.300, 10/12/14X7FT	75	9	10	12	14	
C1070565	LEAD, RS3500.300, 12/14/14X10FT	117	40	12	14	14	
C1070566	LEAD, RS3500.300, 8/10/12/14X10FT	117	28	8	10	12	14
C1070567	LEAD, RS3500.300, 10/12/14/14X10FT	117	10	10	12	14	14
C1070568	LEAD, RS3500.300, 12/14/14/14X10FT	117	6	12	14	14	14
C1501291	EXTENSION, RS3500.300, 3-1/2FT	38					
C1501240	EXTENSION, RS3500.300, 5FT	56					
C1501241	EXTENSION, RS3500.300, 7FT	80					
C1501242	EXTENSION, RS3500.300, 10FT	116					
C1501293	HELICAL EXTENSION, RS3500.300, 14X3-1/2FT	38	27	14			
C1501295	HELICAL EXTENSION, RS3500.300, 14/14X7FT	80	31	14	14		

### \* \* NOTES \* \*

- HOT DIP GALVANIZED PER ASTM A123 (LATEST REV)
- LEAD AND EXTENSION SECTION LENGTHS AND HELIX SPACINGS ARE NOMINAL
- NOMINAL SPACING BETWEEN HELIX PLATES IS THREE TIMES THE DIAMETER OF THE LOWER HELIX
- SHAFT MATERIAL PER ASTM A618 OR A500 GRADE B
- HELIX MATERIAL LOW CARBON STEEL MEETING THE GENERAL REQUIREMENTS OF AISI OR ASTM A36, A572, A656, OR A1018
- COUPLING MATERIAL PER ASTM A513 DOM WITH A MINIMUM YIELD OF 65KSI
- COUPLING BOLTS 3/4" DIAMETER X5-3/4" LONG HEX HEAD PER SAE J425 GRADE 5
- MANUFACTURER TO HAVE IN EFFECT INDUSTRY RECOGNIZED WRITTEN QUALITY CONTROL FOR ALL MATERIALS AND MANUFACTURING PROCESSES
- ALL WELDING TO BE DONE BY WELDERS CERTIFIED UNDER SECTION 5 OF THE AWS CODE D1.1
- EXTENSION MUST BE PROVIDED WITH A WELDED SLEEVE ON ONE END WITH MATERIAL PER NOTE 6
- SEE ICC EVALUATION SERVICE INC., EVALUATION REPORT #ESR-2794 FOR ALLOWABLE VALUES AND/OR CONDITIONS OF USE CONCERNING MATERIAL PRESENTED IN THIS DOCUMENT



<b>CHANCE®</b>		<b>HUBBELL®</b> HUBBELL POWER SYSTEMS, Inc. POWER SYSTEMS, INC.	
CONFIDENTIAL: THIS DRAWING AND ITS CONTENTS ARE CONFIDENTIAL AND THE EXCLUSIVE PROPERTY OF HUBBELL POWER SYSTEMS. NO PUBLICATION, DISTRIBUTION OR COPIES MAY BE MADE WITHOUT THE WRITTEN CONSENT OF HUBBELL POWER SYSTEMS. HUBBELL POWER SYSTEMS UNPUBLISHED ALL RIGHTS RESERVED UNDER THE COPYRIGHT LAWS.		TITLE <b>RS3500.300 PIPE PILES ICC-ES (AC-358)</b>	
SIZE <b>SB</b>	CAT / PART / ASSY NO. <b>SEE CHART</b>	DWG NO. <b>SA1501240</b>	REV -
DO NOT SCALE THIS DRAWING	DRN BY TMK	DATE 11/5/14	SHEET 1 OF 1