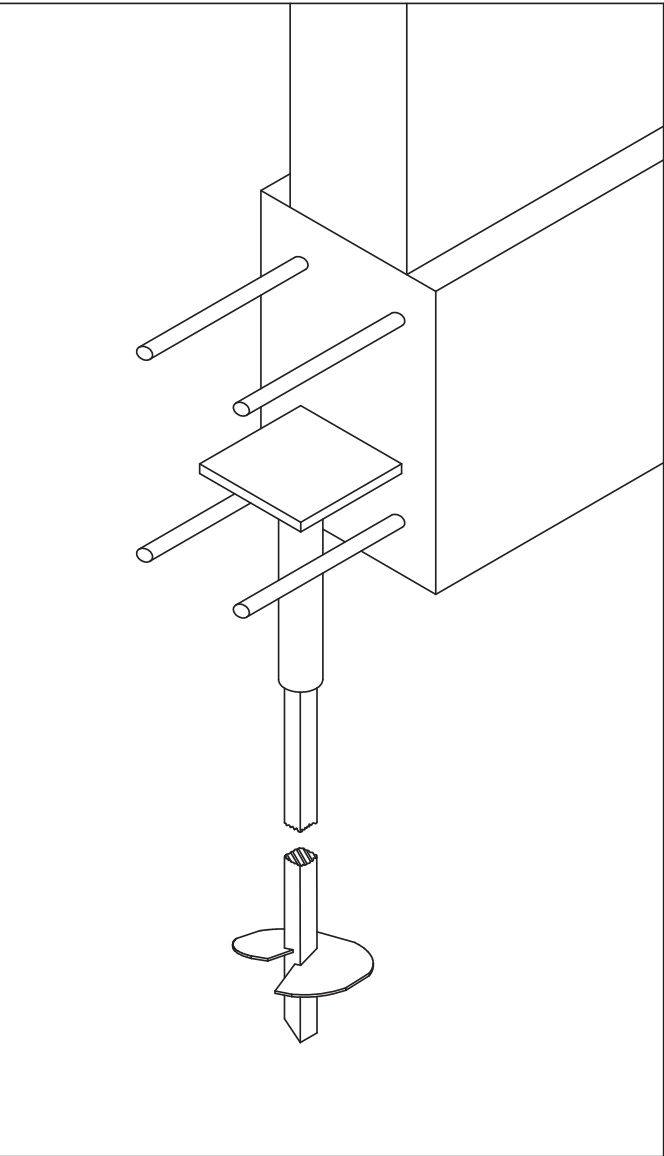
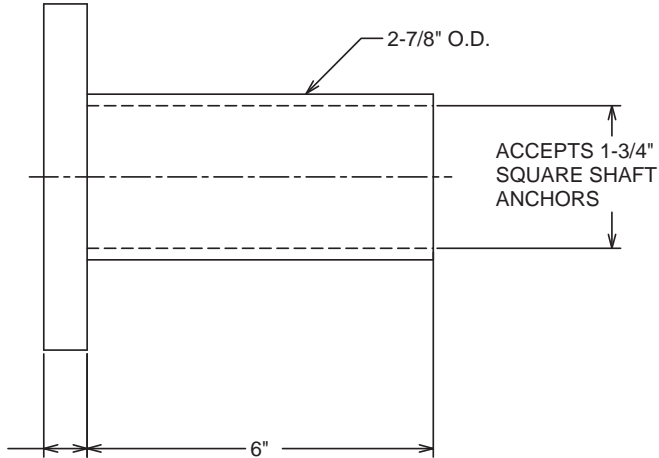
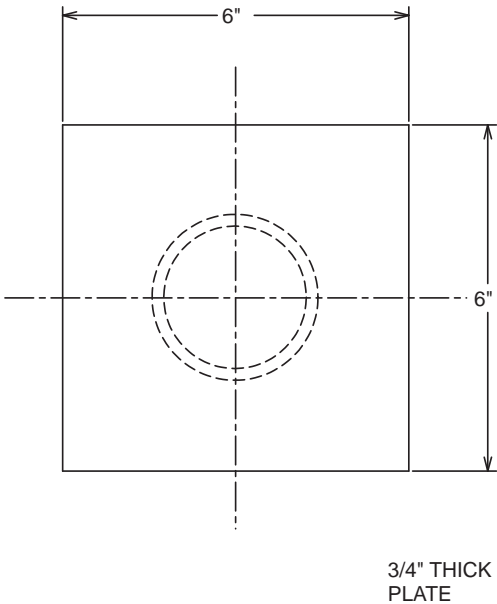


==NOTES==

1. FINISH: MILL FINISH STEEL.
2. MATERIAL SPECIFICATIONS:
 PIPE: STEEL TUBE, ROUND, PER ASTM A500 GRADE B.
 PLATE: PER ASTM A36.
3. RATING: 30 TON COMPRESSION WORKING/DESIGN LOAD.
 THIS RATING IS VALID ONLY IF THE PIER CAP DETAIL
 HAS BEEN DESIGNED TO ENSURE ADEQUATE LOAD TRANSFER
 FROM REINFORCED CONCRETE FOUNDATION TO SCREW PIER, AND
 IN ACCORDANCE WITH EXISTING LOCAL CODE REQUIREMENTS AND /OR
 ESTABLISHED LOCAL PRACTICES.



INSTALLATION CONCEPT OF
PIER CAP DETAIL



CATALOG NUMBER
C150-0459

LATEST EC NO:	REV.	DATE	CHANGED BY	RESP ENGINEER
04807	A	05/24/02	JOBE	BEARD
PIER CAP, FOR NEW CONSTRUCTION				

MARTIN 02-28-02 **HUBBELL** POWER SYSTEMS, INC. DWG NO: SA150-0459

CONFIDENTIAL - THIS DRAWING AND ITS CONTENTS ARE CONFIDENTIAL AND THE EXCLUSIVE PROPERTY OF HUBBELL POWER SYSTEMS, INC. NO REPRODUCTION OR DISSEMINATION OF THIS DRAWING OR ITS CONTENTS IS PERMITTED WITHOUT WRITTEN CONSENT BY HUBBELL POWER SYSTEMS, INC. © 2002 HUBBELL/A.B. CHANGE. UNPUBLISHED - ALL RIGHTS RESERVED UNDER THE COPYRIGHT LAWS