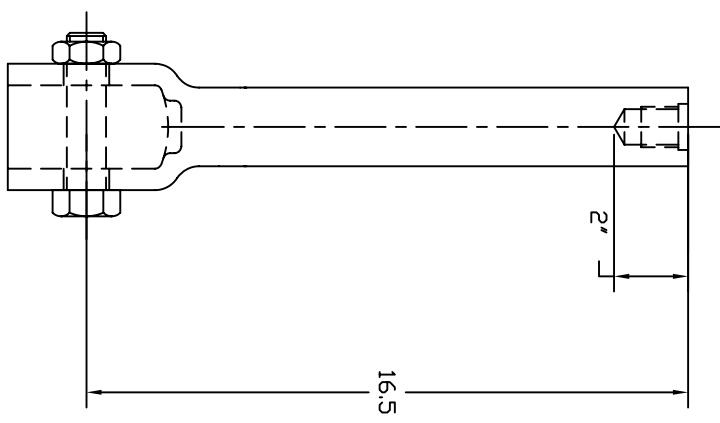


- ==NOTES==
1. HOT DIP GALVANIZED PER ASTM A153-(LATEST REVISION).
  2. SHAFT MATERIAL-HOT ROLLED ROUND-CORNERED-SQUARE (RCS) SOLID STEEL BARS PER ASTM A29; MINIMUM YIELD STRENGTH=70 KSI.
  3. COUPLING BOLTS: 3/4" DIAMETER X 3" LONG HEX HEAD PER ASTM A320 GRADE L7.
  4. MANUFACTURER TO HAVE IN EFFECT INDUSTRY RECOGNIZED WRITTEN QUALITY CONTROL FOR ALL MATERIALS AND MANUFACTURING PROCESSES.



CATALOG NUMBER  
T114-0266

<p>CONFIDENTIAL: THIS DRAWING AND ITS CONTENTS ARE THE EXCLUSIVE PROPERTY OF HUBBELL POWER SYSTEMS. NO PUBLICATION, DISTRIBUTION OR COPIES MAY BE MADE WITHOUT THE WRITTEN CONSENT OF HUBBELL POWER SYSTEMS UNPUBLISHED. ALL RIGHTS RESERVED UNDER THE COPYRIGHT LAWS.</p>		<p>CHANCE</p>	
<p>HUBBELL POWER SYSTEMS, INC.</p>		<p>HUBBELL POWER SYSTEMS</p>	
<p>TITLE</p>		<p>1-1/2" SS150</p>	
<p>SIZE</p>		<p>DMG NO.</p>	
<p>SB</p>		<p>SA114-0266</p>	
<p>DO NOT SCALE THIS DRAWING</p>		<p>DWN BY KSH</p>	
<p>DATE 7/29/05</p>		<p>SHEET 1/1</p>	
<p>REV</p>		<p>-</p>	