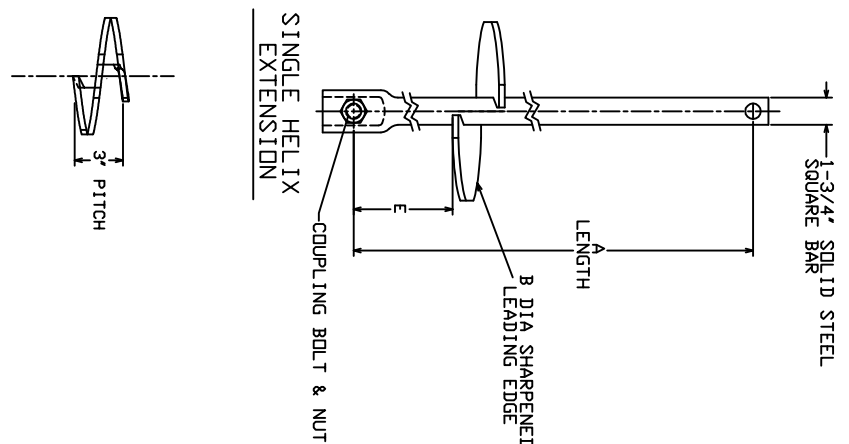
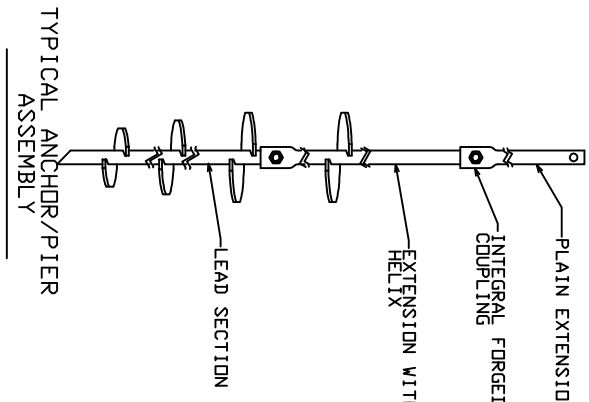
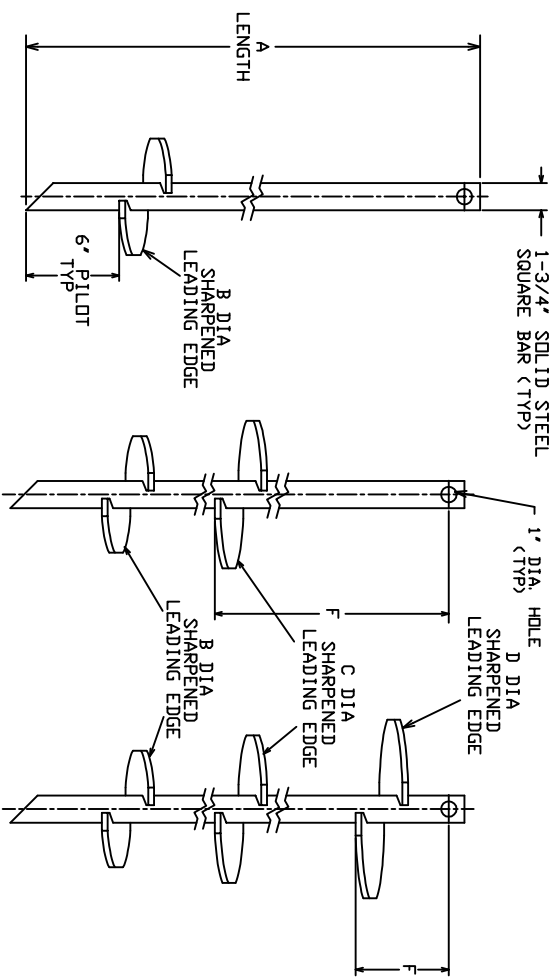


SS175
HELICAL PIERS AND ANCHORS
1/2" THICK HELIX

TORQUE STRENGTH RATING--11,000 FT-LB
ULTIMATE CAPACITY*(COMPRESSION)--110 KIP
* BASED ON A TORQUE FACTOR (K_t)=10
SINGLE HELIX ULTIMATE STRENGTH--60 KIP
ULTIMATE TENSION STRENGTH (COUPLING BOLT)--100 KIP



==NOTES==

- HOT DIP GALVANIZED PER ASTM A153-(LATEST REVISION).
- LEAD AND EXTENSION SECTION LENGTHS AND HELIX SPACINGS ARE NOMINAL.
- NOMINAL SPACING BETWEEN HELIX PLATES IS THREE TIMES THE DIAMETER OF THE LOWER HELIX.
- SHAFT MATERIAL--HOT ROLLED ROUND-CORNERED-SQUARE (RCS) SOLID STEEL BARS PER ASTM A29; MINIMUM YIELD STRENGTH=90 KSI.
- HELIX MATERIAL--HOT ROLLED LOW CARBON STEEL SHEET, STRIP, OR PLATE PER ASTM A656, OR A1018 GRADE 80; MINIMUM YIELD STRENGTH=80 KSI; 1/2" THICK.
- COUPLING BOLTS: 7/8" DIAMETER X 3-1/2" LONG HEX HEAD PER ASTM A193 GRADE B7.
- MANUFACTURER TO HAVE IN EFFECT INDUSTRY RECOGNIZED WRITTEN QUALITY CONTROL FOR ALL MATERIALS AND MANUFACTURING PROCESSES.
- ALL WELDING TO BE DONE BY WELDERS CERTIFIED UNDER SECTION 5 OF THE AWS CODE D1.1.
- REFER TO SA150-0183 FOR PLAIN EXTENSIONS AND TERMINATIONS.

HELIX MUST BE FORMED BY MATCHING METAL DIE
(SIDE VIEW OF TRUE HELICAL FORM)

CAT. NO.	A	B	C	D	F
T150-0264	64.5"	8"			58.5"
T150-0263	64.5"	10"			58.5"
T150-0262	64.5"	8"			34.5"
T150-0261	64.5"	8"	10"	12"	7.5"
PSAT1500496	64.5"	6"			58.5"
T150-0557	64.5"	6"		8"	40.5"

CAT. NO.	A	B	E
T150-0260	46"	14"	40"

CHANCE

HUBBELL POWER SYSTEMS

SS175 HELICAL ANCHORS
1/2" THICK HELIX

DATE 4/12/06

SHEET 1/1