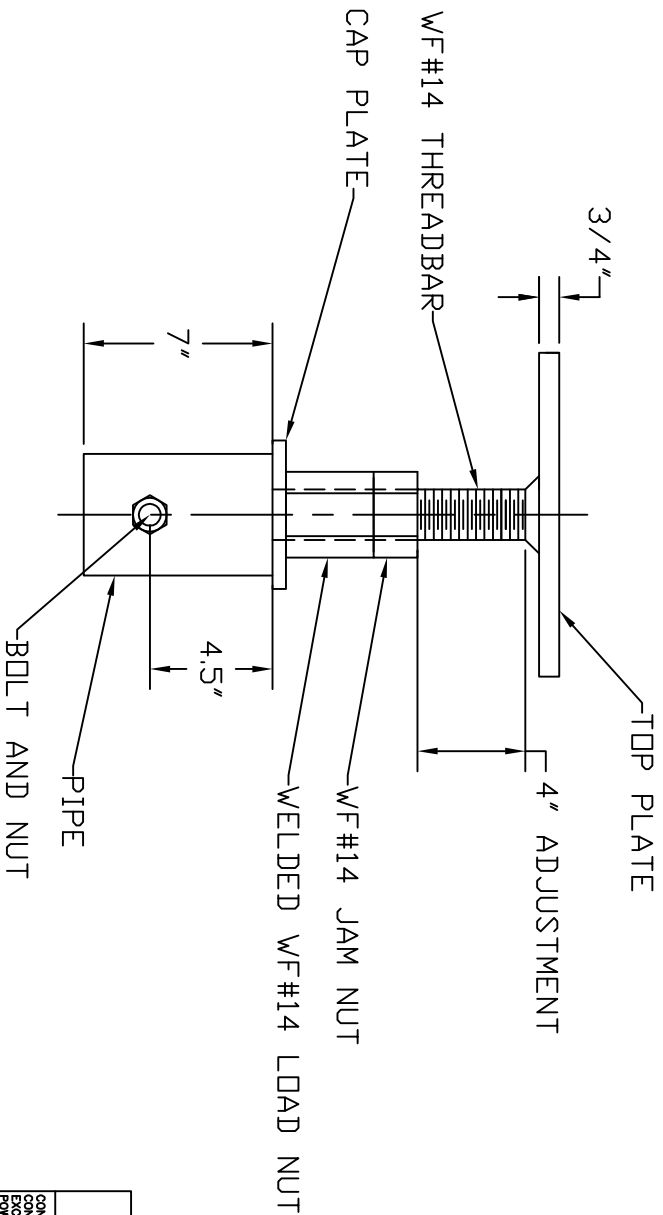


12" DIA.

=NOTES=

1. FINISH: PLAIN MILL FINISH.
2. MATERIAL SPECIFICATIONS:
 PIPE: 4" SCH. 80 STEEL PIPE PER ASTM A500 GRADE C, MIN YIELD 50 KSI.
 TOP PLATE: HOT ROLLED STEEL PER ASTM A572, GRADE 50
 CAP PLATE: HOT ROLLED STEEL PER ASTM A572, GRADE 80, 1/2" THICK.
 THREADBAR: WILLIAMS FORM GRADE 75 ALL-THREAD REBAR #14, LEFT-HAND.
 BOLT: HEX BOLT 3/4-10UNC-2A X 5-1/4" LONG PER SAE J429, GRADE 5.
3. FOR GALVANIZED FINISH PER ASTM A153 - (LATEST REVISION) PLEASE ADD "G" TO CATALOG NUMBER.



CHANCE TOLERANCE CHART		HUBBELL POWER SYSTEMS	
<small>CONFIDENTIAL: THIS DRAWING AND ITS CONTENTS ARE THE EXCLUSIVE PROPERTY OF HUBBELL POWER SYSTEMS. NO PUBLICATION, DISTRIBUTION OR COPIES MAY BE MADE WITHOUT THE WRITTEN CONSENT OF HUBBELL POWER SYSTEMS UNPUBLISHED. ALL RIGHTS RESERVED UNDER THE COPYRIGHT LAWS.</small>			
TITLE RS3500 THREADED NEW CONSTRUCTION CAP		DWG NO. SB SA1501408	CAT / PART / ASSY NO. C1501408
DO NOT SCALE THIS DRAWING	DWN BY JVH	DATE 2/4/15	SHEET 1 OF 1